

## TECHNICAL INFORMATION AND PRODUCT INFORMATION

**LUKAS flap rolls**

These rolls have a 19 mm bore and four keyways for use on handheld surface grinding machines (burnishing machines).

**LWL, FLAP ROLLS MADE OF ABRASIVE CLOTH FOR BURNISHING MACHINES**

These tools are comprised of single flaps that are radially fixed around the axis in a plastic core. Please pay attention to the rotational direction of the tool! **Page 190**

**Application examples:**

- Cleaning
- Deburring
- Derusting
- Preparation
- Texturing
- Roughening

**LWV, FLAP ROLLS MADE OF ABRASIVE FLEECE FOR BURNISHING MACHINES**

This design is comprised of abrasive fleece flaps. The use of fibre fleece makes the tool elastic and allows it to adapt itself to the shape of the workpiece. **Page 191**

**Application examples:**

- Matt finishing
- Satin-matt finishing
- Polishing
- Smoothing
- Final finishing of the workpiece surfaces

**LWM, FLAP ROLLS MADE OF TF MATERIAL**

These rolls with a 19 mm bore and four keyways are specially designed for use on non-rusting materials. The abrasive fleece, with its reinforced backing, guarantees even wear of the abrasive fleece and cloth flaps. Please pay attention to the rotational direction of the tool! **Page 192**

**LWM, FLAP ROLLS FOR BURNISHING MACHINES MADE OF ABRASIVE FLEECE/CLOTH IN COMBINATION**

The combination of abrasive cloth and abrasive fleece results in a higher stock removal rate compared to type LWV. Please pay attention to the rotational direction of the tool! **Pages 192 / 193**

**Application examples:**

- Cleaning
- Derusting
- surface preparation
- Texturing
- Roughening

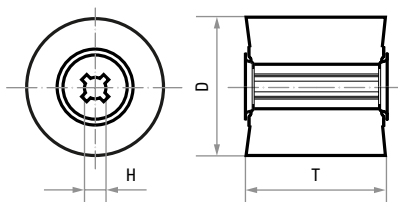
**LWF, SINUS ABRASIVE ROLL MADE OF ABRASIVE FLEECE FOR CONDITIONING MACHINES**

These tools consist of abrasive fleece webs that are wound around the core in a wave pattern. This wave arrangement enables matt finishing of surfaces without visible transitions. The use of fibre fleece makes the LWF elastic and allows it to adapt itself to the shape of the workpiece. **Page 193**

**Application examples:**

- Matt finishing
- Satin-matt finishing
- Polishing
- Smoothing
- Final finishing of the workpiece surfaces

## LWL, flap roll made of abrasive cloth



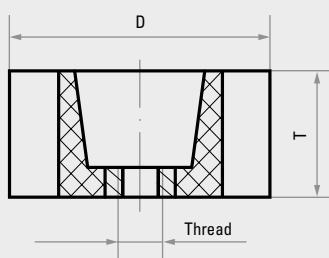
★★☆

- for cleaning, deburring, derusting, surface preparation, texturing and roughening
- for conditioning machines

Product number	Description	Grit	D mm	T mm	H mm	$n_{\text{recom}}$ rpm	$n_{\text{max}}$ rpm	Pack contains
A2280100500040	LWL 100050	NK 40	100	50	19	3,700	6,000	2
A2280100500060	LWL 100050	NK 60	100	50	19	3,700	6,000	2
A2280100500080	LWL 100050	NK 80	100	50	19	3,700	6,000	2
A22801001000040	LWL 100100	NK 40	100	100	19	3,700	6,000	1
A22801001000060	LWL 100100	NK 60	100	100	19	3,700	6,000	1
A22801001000080	LWL 100100	NK 80	100	100	19	3,700	6,000	1

Recommended for: ● Inox/Steel ● Steel ● Aluminium ● Cast material ● Plastic/Wood ● Titanium

## LWL, flap roll made of abrasive cloth with thread



★★☆

- fits on commercially available angle grinders
- for cleaning, deburring, derusting, surface preparation, texturing and roughening

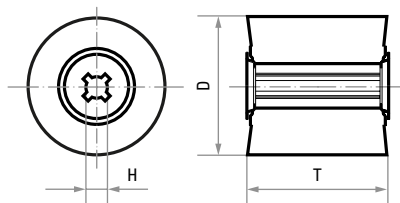
Product number	Description	Grit	D mm	T mm	Thread	$n_{\text{recom}}$ rpm	$n_{\text{max}}$ rpm	Pack contains
A2280100501060	LWL 100050	NK 60	100	50	M14	3,700	6,000	2
A2280100501080	LWL 100050	NK 80	100	50	M14	3,700	6,000	2

Recommended for: ● Inox/Steel ● Steel ● Aluminium ● Cast material ● Plastic/Wood ● Titanium



### LWV, flap roll made of abrasive fleece

- for conditioning machines
- use of fibre fleece makes it elastic
- adapts itself to the shape of the workpiece
- for matt finishing, satin-matt finishing, polishing, smoothening and final finishing of workpiece surfaces



★★☆

Product number	Description	Quality	Grit	D mm	T mm	H mm	n <sub>recom</sub> rpm	n <sub>max</sub> rpm	Pack contains
A2286100500104	LWV 100050	A104	NK 100	100	50	19	2,800	6,000	2
A2286100500106	LWV 100050	A106	NK 180	100	50	19	2,800	6,000	2
A2286100500107	LWV 100050	A107	NK 280	100	50	19	2,800	6,000	2
A22861001000104	LWV 100100	A104	NK 100	100	100	19	2,800	6,000	1
A22861001000106	LWV 100100	A106	NK 180	100	100	19	2,800	6,000	1
A22861001000107	LWV 100100	A107	NK 280	100	100	19	2,800	6,000	1

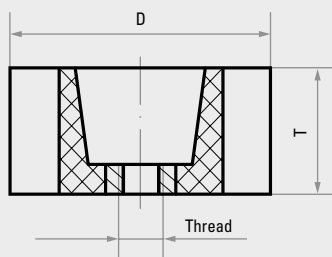
Recommended for: ● Inox/Steel ● Steel ● Aluminium ● Cast material ● Plastic/Wood ● Titanium

GRINDING AND POLISHING (with flexible tools)



### LWV, flap roll made of abrasive fleece with thread

- fits on commercially available angle grinders
- use of fibre fleece makes it elastic
- adapts itself to the shape of the workpiece
- for matt finishing, satin-matt finishing, polishing, smoothening and final finishing of workpiece surfaces

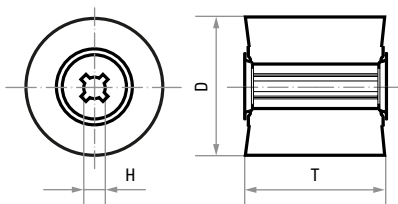


★★☆

Product number	Description	Grit	D mm	T mm	Thread	n <sub>recom</sub> rpm	n <sub>max</sub> rpm	Pack contains
A2286100501104	LWV 100050	A 104	100	50	M14	2,800	6,000	2
A2286100501106	LWV 100050	A 106	100	50	M14	2,800	6,000	2
A2286100501107	LWV 100050	A 107	100	50	M14	2,800	6,000	2

Recommended for: ● Inox/Steel ● Steel ● Aluminium ● Cast material ● Plastic/Wood ● Titanium

## LWM, flap roll made of abrasive fleece TF and cloth in combination

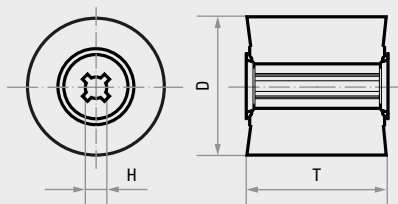


- for conditioning machines
- Due to its highly robust abrasive fleece made of TF material, this mounted flap wheel wears evenly.
- perfect for continuous working
- ideal for machining the surfaces of sheet metal products made from stainless steel such as sinks and containers
- for cleaning, deburring, derusting, surface preparation, texturing and roughening

★★★

Product number	Description	Grit	D mm	T mm	H mm	$n_{\text{recom}}$ rpm	$n_{\text{max}}$ rpm	Pack contains
A22881001000120	LWM 100100	TF 120/80	100	100	19	2,800	6,000	1
Recommended for:			<span style="color: blue;">●</span> Inox/Steel	<span style="color: grey;">●</span> Steel	<span style="color: orange;">●</span> Aluminium	<span style="color: red;">●</span> Cast material	<span style="color: yellow;">●</span> Plastic/Wood	<span style="color: grey;">●</span> Titanium

## LWM, flap roll made of abrasive fleece and cloth in combination



- for conditioning machines
- for continuous working
- better stock removal performance than flap rolls made solely with abrasive fleece
- for cleaning, deburring, derusting, surface preparation, texturing and roughening

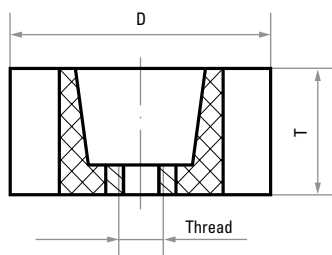
★★☆

Product number	Description	Quality	Grit	D mm	T mm	H mm	$n_{\text{recom}}$ rpm	$n_{\text{max}}$ rpm	Pack contains
A2288100500104	LWM 100050	A104/80	NK 100/80	100	50	19	2,800	6,000	2
A2288100500106	LWM 100050	A106/150	NK 180/150	100	50	19	2,800	6,000	2
A2288100500107	LWM 100050	A107/240	NK 280/240	100	50	19	2,800	6,000	2
A22881001000104	LWM 100100	A104/80	NK 100/80	100	100	19	2,800	6,000	1
A22881001000106	LWM 100100	A106/150	NK 180/150	100	100	19	2,800	6,000	1
A22881001000107	LWM 100100	A107/240	NK 280/240	100	100	19	2,800	6,000	1
Recommended for:			<span style="color: blue;">●</span> Inox/Steel	<span style="color: grey;">●</span> Steel	<span style="color: orange;">●</span> Aluminium	<span style="color: red;">●</span> Cast material	<span style="color: yellow;">●</span> Plastic/Wood	<span style="color: grey;">●</span> Titanium	



## LWM, flap rolls made of combined abrasive fleece and cloth with thread

- fits on commercially available angle grinders
- for continuous working
- better stock removal performance than flap rolls made solely with abrasive fleece
- for cleaning, deburring, derusting, surface preparation, texturing and roughening



★★☆

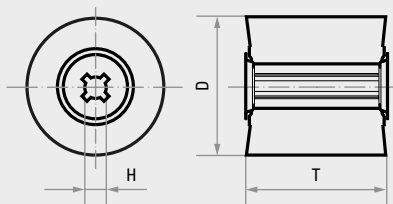
Product number	Description	Quality	Grit	D mm	T mm	Thread	n <sub>recom</sub> rpm	n <sub>max</sub> rpm	Pack contains
A2288100501104	LWM 100050	A104/80	NK 100/80	100	50	M14	2,800	6,000	2
A2288100501106	LWM 100050	A106/150	NK 180/150	100	50	M14	2,800	6,000	2

Recommended for: ● Inox/Steel ● Steel ● Aluminium ● Cast material ● Plastic/ Wood ● Titanium



## LWF, sinus abrasive roll with abrasive fleece

- fits on commercially available angle grinders
- The wave arrangement enables matt finishing of surfaces without visible imperfections.
- use of fibre fleece makes it elastic
- adapts itself to the shape of the workpiece
- for matt finishing, satin-matt finishing, polishing, smoothing and final finishing of workpiece surfaces



★★☆

Product number	Description	Quality	Grit	D mm	T mm	H mm	n <sub>recom</sub> rpm	n <sub>max</sub> rpm	Pack contains
A22811001000104	LWF 100100	A104	NK 100	100	100	19	2,800	3,800	1
A22811001000106	LWF 100100	A106	NK 180	100	100	19	2,800	3,800	1

Recommended use for A quality: ● Inox/Steel ● Steel ● Cast material ● Plastic/ Wood ● Aluminium ● Titanium

A2281100500208	LWF 100050	C208	SIC 400	100	50	19	2,800	3,800	2
A22811001000208	LWF 100100	C208	SIC 400	100	100	19	2,800	3,800	1

Recommended use for C quality: ● Aluminium ● Plastic/ Wood ● Titanium ● Inox/Steel ● Steel ● Cast material