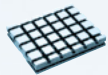


6 T-SLOT SYSTEMS





Product group

Page

Base Elements

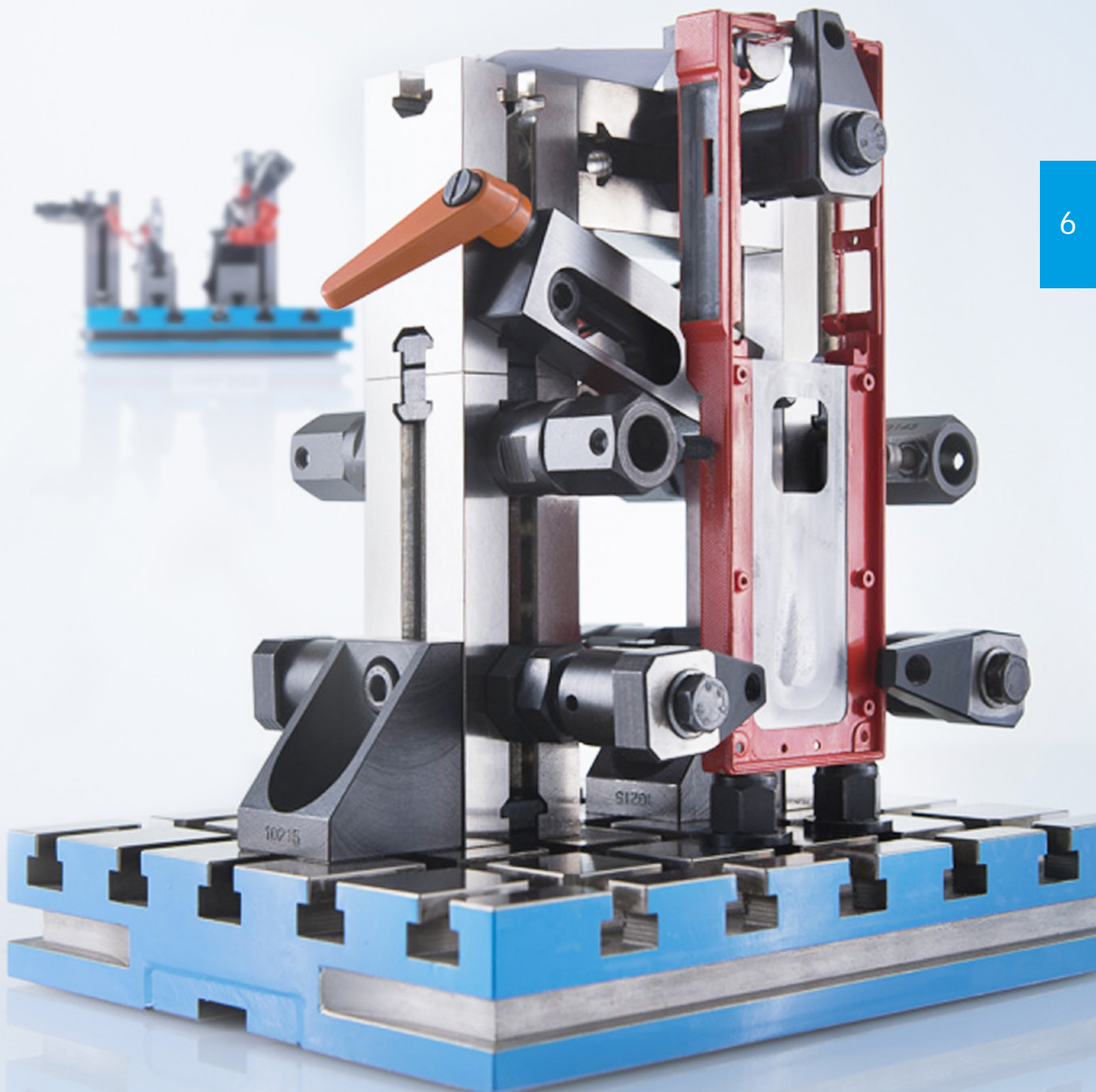
710

Mounting Elements

725

Standard Ranges

761



T-SLOT SYSTEMS

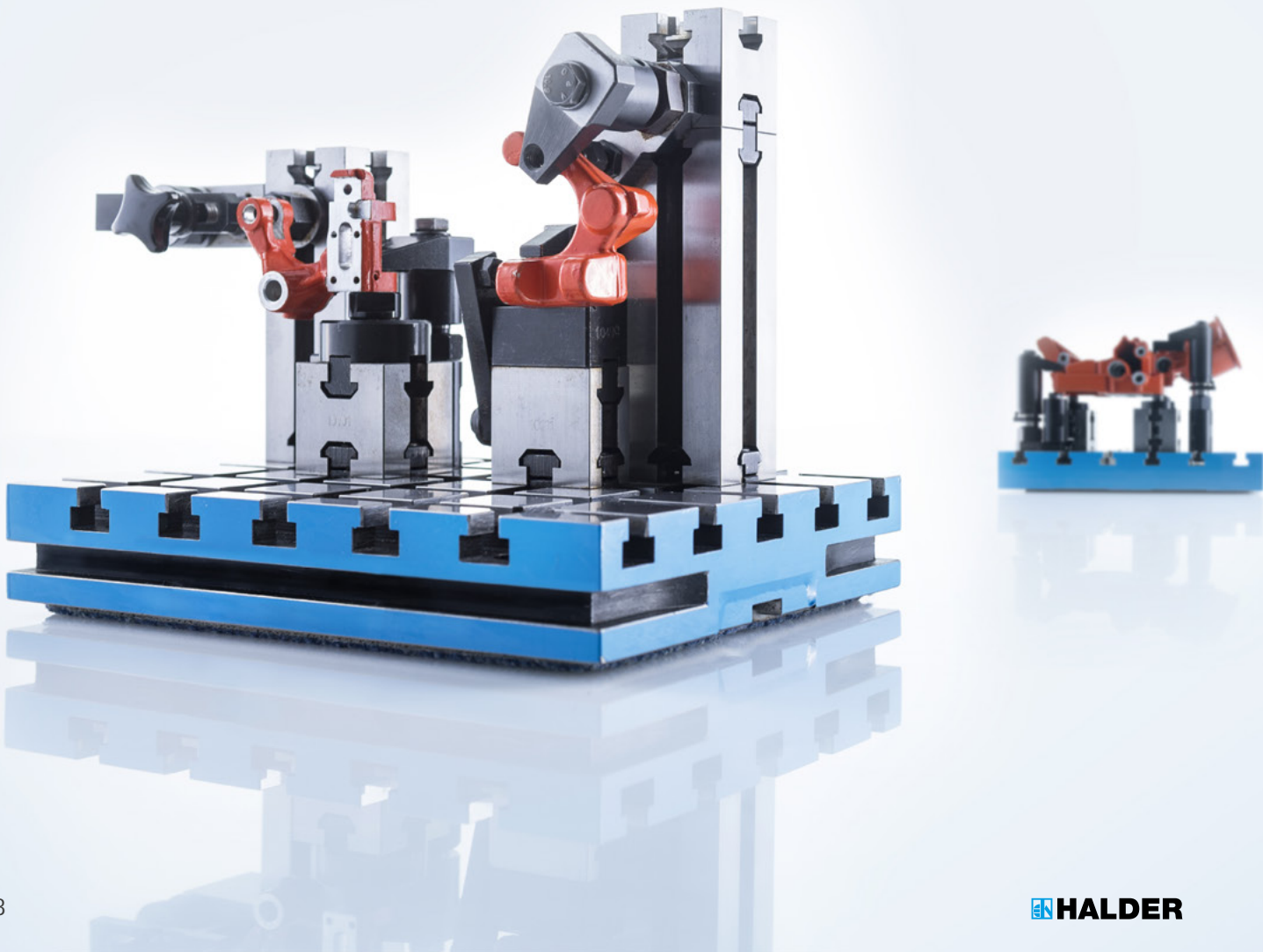
T-SLOT SYSTEMS V40/V70

Our V40 and V70 systems are the classics among T-slot systems and have proven their merits for years. The T-slot system is based on tempered base plates with grid dimensions of 40 mm or 70 mm.

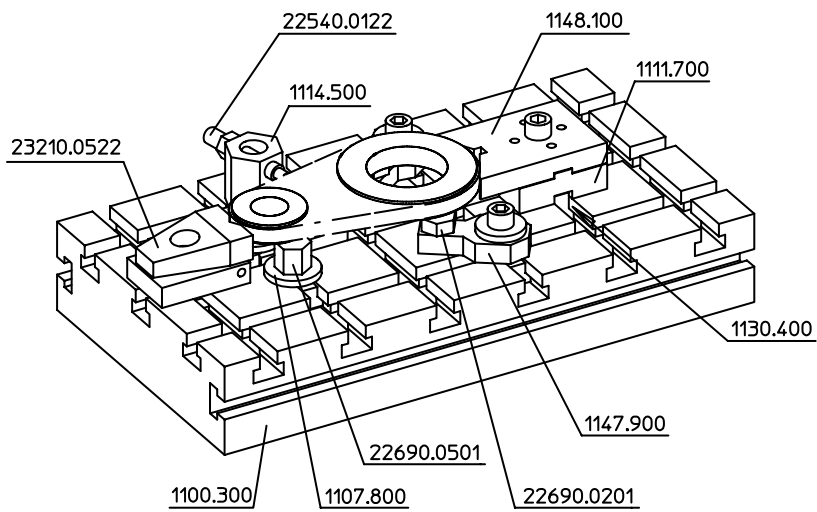
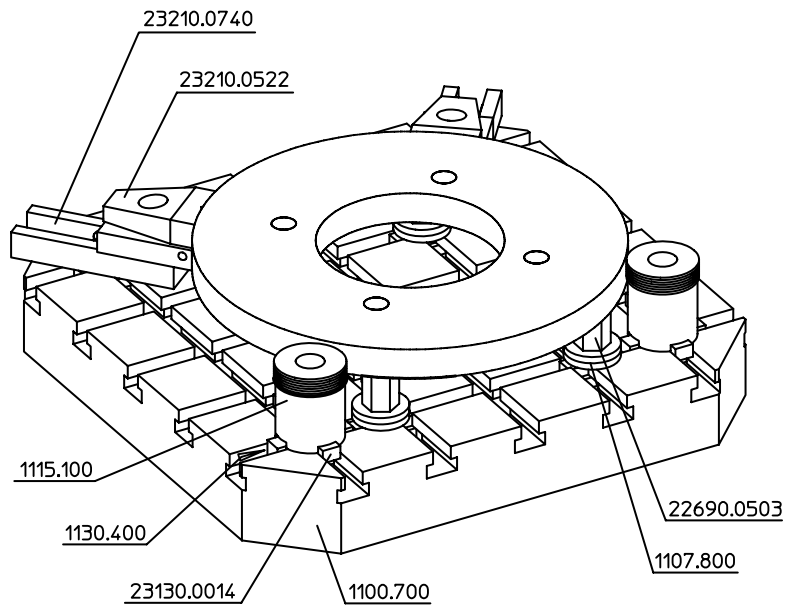
Since the system parts can be fixed in place and clamped at the same time, you can set up the fixture quickly and with no effort at all. This outstanding level of flexibility during set-up makes the T-slot system a stellar choice for machining complex workpieces

T-SLOT SYSTEM V70ECO

Taking the V70 series to the next level of performance, the V70eco delivers exceptional quality at unbeatable prices. The V70eco is composed of base plates made of high-strength steel with 70 mm grid dimensions and comes with mounting blocks that are fully compatible with the V70 system. **The cost benefit compared to the V70 T-slot system ranges up to 40%!**



APPLICATION SAMPLE



Base Plates

EH 1000.400 - EH 1000.500



PRODUCT DESCRIPTION

Material

- Steel, hardened, ground

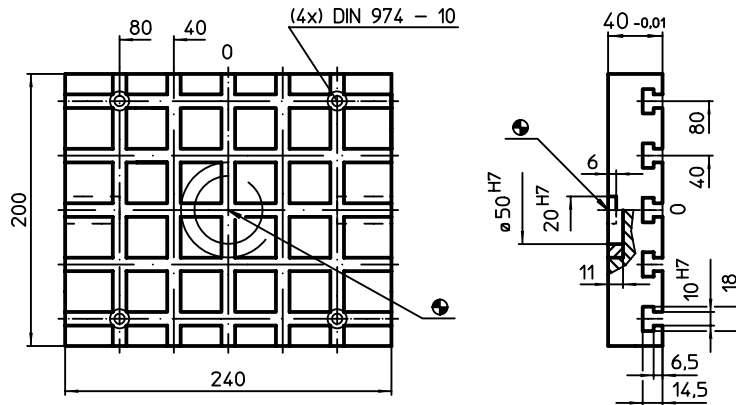
MORE INFORMATION

Notes

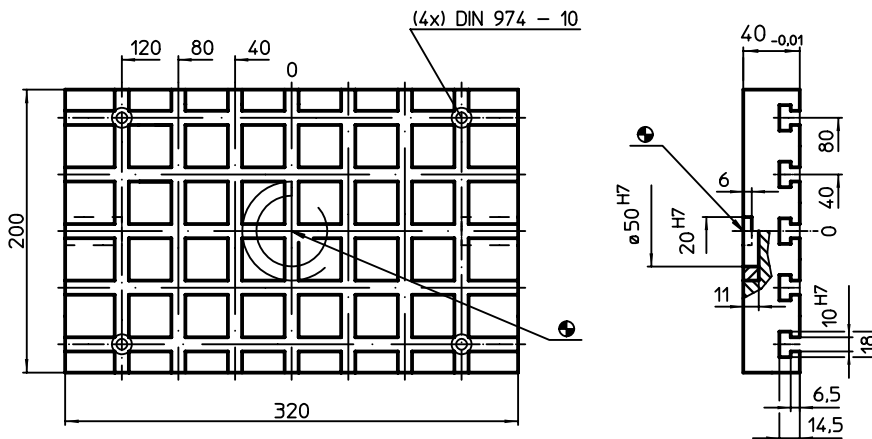
Special types on request.

DRAWING

1000.400



1000.500



Slot spacing $40 \pm 0,01$.

ORDER INFORMATION

System	b ₁	b ₂	Dimensions			y	Number of T-slots	[kg]	Art. No.
			l ₁	l ₂	y				
			[mm]						
V40	200	80	240	80	10	10	5 x 5	10,5	1000.400
			320	40	10	10	5 x 7	14,0	1000.500

Base Plates • overall dimensions same as pallets DIN 55 201
EH 1000.800



PRODUCT DESCRIPTION

Material

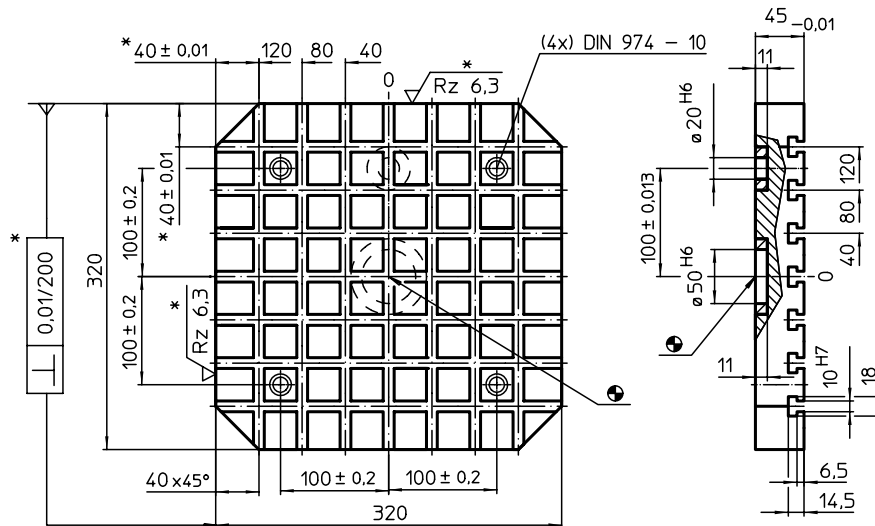
- Steel, hardened, ground

MORE INFORMATION

Notes

Special types on request.

DRAWING

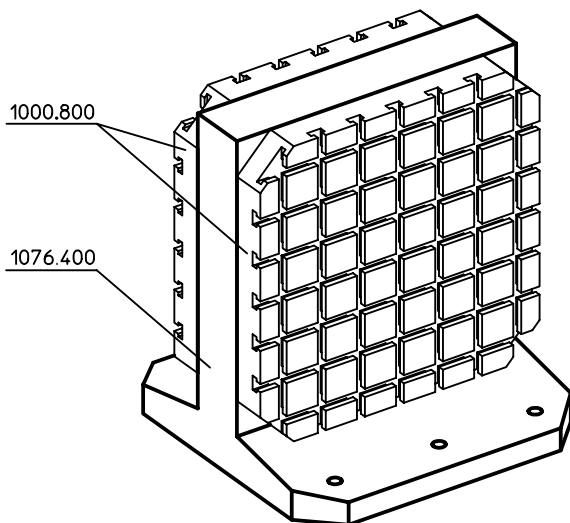


* These tolerances are valid only for optional exterior stop type. Slot spacing 40 ± 0.01.

ORDER INFORMATION

System	Dimensions											y [mm]	Number of T-slots	[kg]	Art. No.
	a	b ₁	b ₂	b ₃	c	d	l ₁	l ₂	l ₃	y	[mm]				
V40	100	320	100	40	40	20	320	100	40	10	10	7 x 7	24,5	1000.800	

APPLICATION EXAMPLE



Base Plates

EH 1002.100



PRODUCT DESCRIPTION

Material

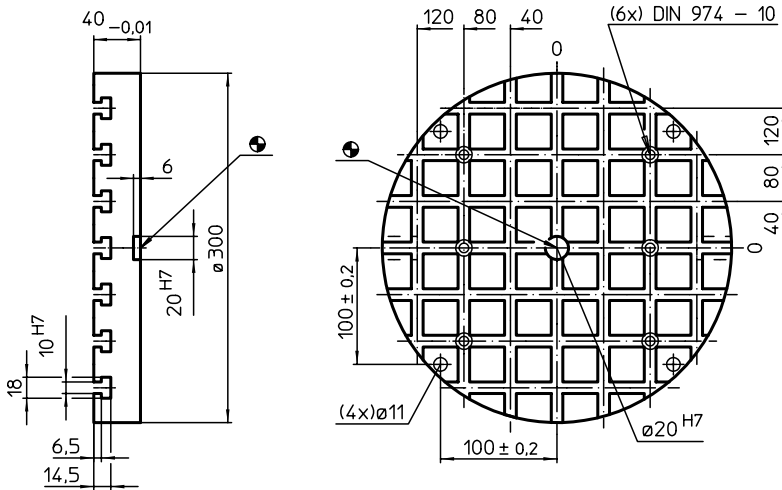
- Steel, hardened, ground

MORE INFORMATION


Notes

Special types on request.

DRAWING

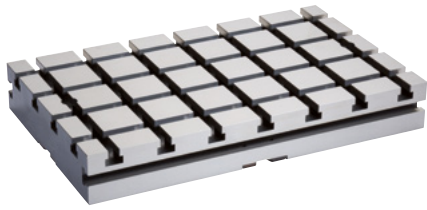


ORDER INFORMATION

System	Dimensions		Number of T-slots	 [kg]	Art. No.
	b_1	d_1			
V40	100	300	7 x 7	15	1002.100

Base Plates

EH 1100.300 - EH 1100.500



PRODUCT DESCRIPTION

Material

- Steel, hardened, ground

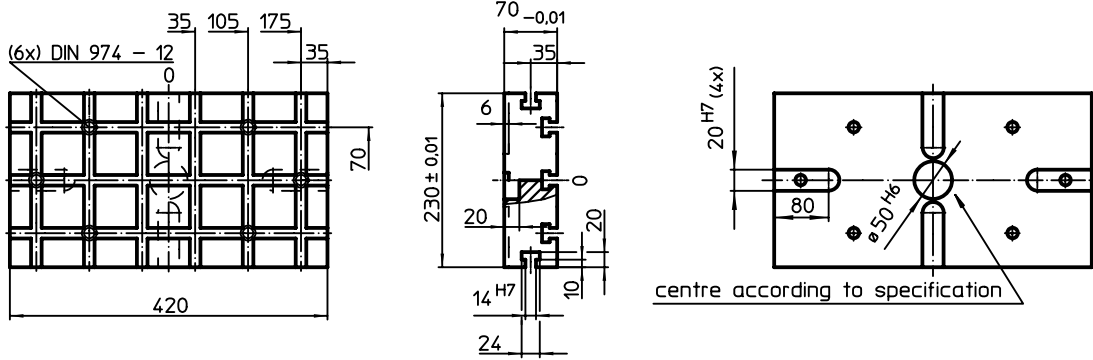
MORE INFORMATION

Notes

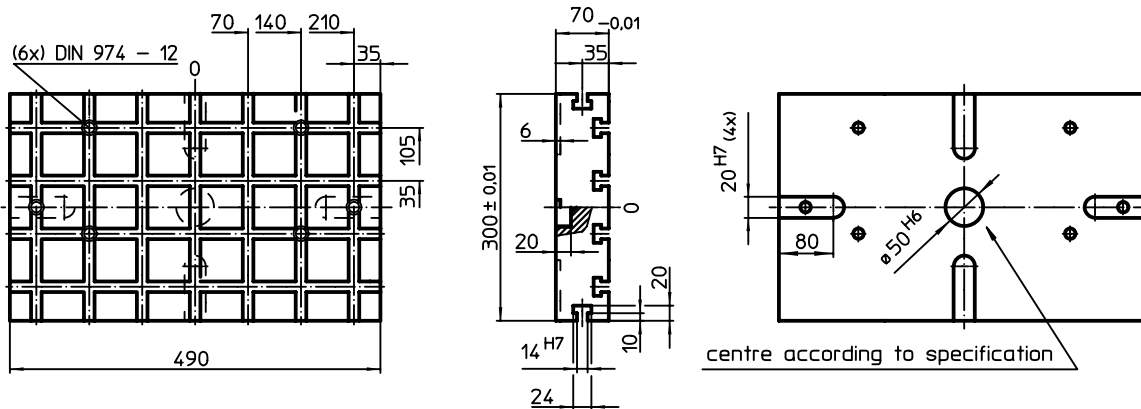
Special types on request.

DRAWING

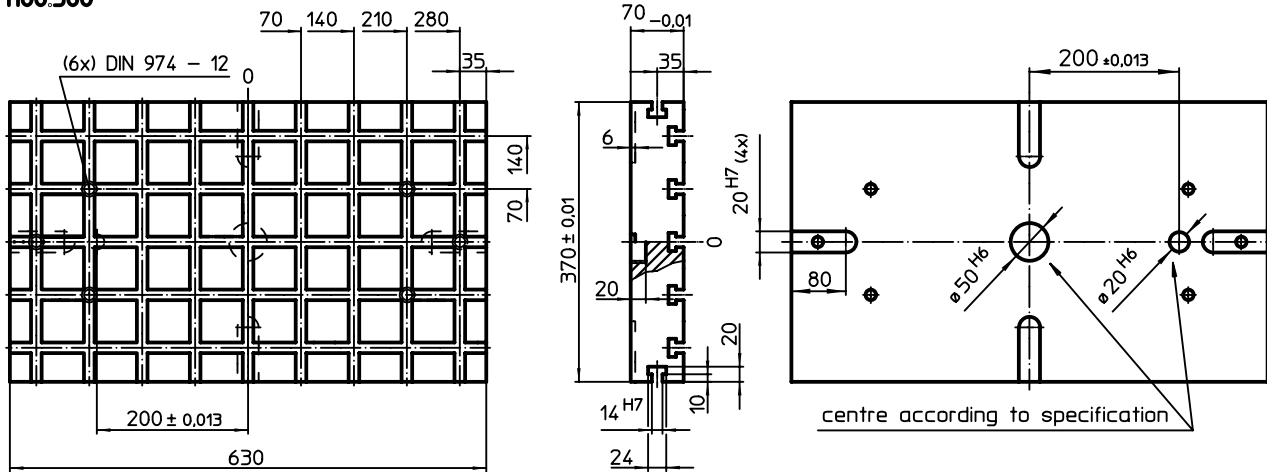
1100.300



1100.400




1100.500

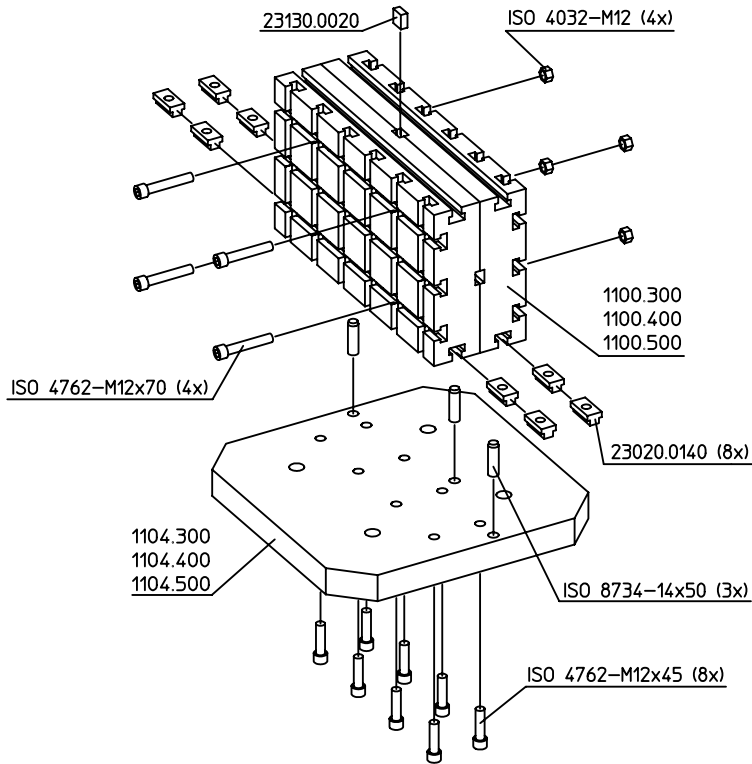


Slot spacing 70 ± 0.01.

ORDER INFORMATION

System	Dimensions					y [mm]	Number of T-slots	 [kg]	Art. No.
	b ₁	b ₂	l ₁ [mm]	l ₂	y				
V70	230	70	420	105	12	12	3 x 6	40	1100.300
	300	140	490	140	12	12	4 x 7	60	1100.400
	370	70	630	210	12	12	5 x 9	95	1100.500

APPLICATION EXAMPLE



6

Base Plates • overall dimensions same as pallets DIN 55 201
EH 1100.700 - EH 1103.500



PRODUCT DESCRIPTION

Material

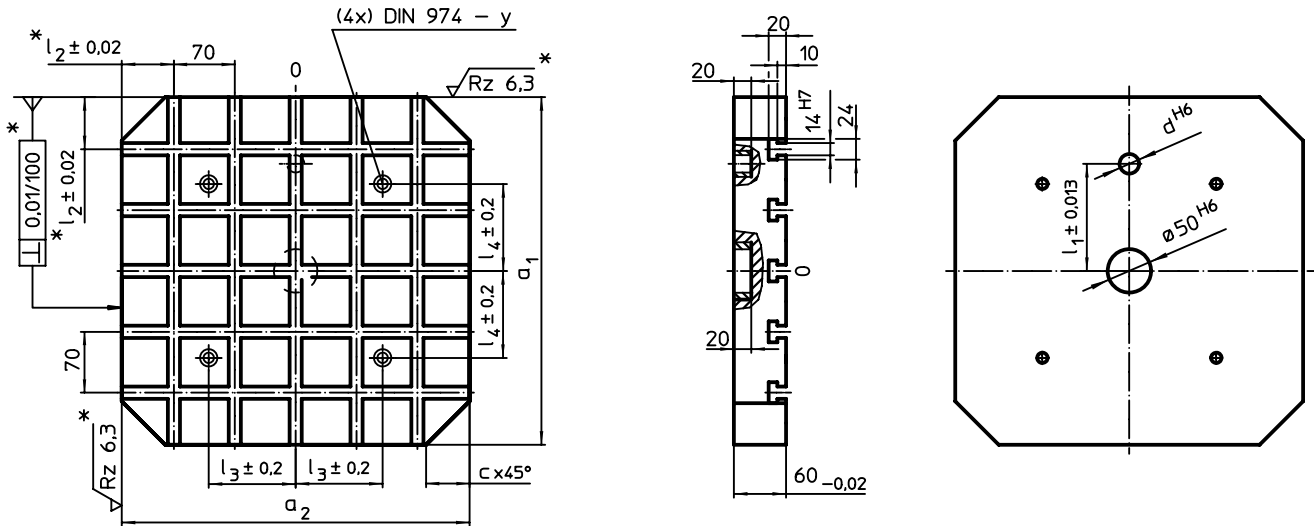
- Steel, hardened, ground

MORE INFORMATION

Notes

Special types on request.

DRAWING



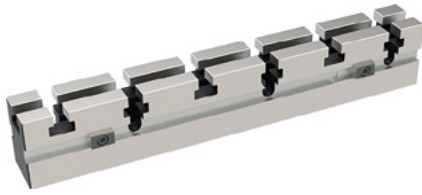
* These tolerances are valid only for optional exterior stop type. Slot spacing $70 \pm 0,01$.

ORDER INFORMATION

System	Dimensions							For screws	y	Number of T-slots	[kg]	Art. No.
	$a_1 \times a_2$	c	d	l_1	l_2	l_3	l_4					
V70	400 x 400	50	20	150	60	100	100	M12	12	5 x 5	56	1100.700
	500 x 500	60	20	200	40	200	200	M12	12	7 x 7	84	1100.800
	630 x 630	70	25	200	35	200	200	M16	16	9 x 9	129	1100.900
	400 x 500	50	20	150	60/40	200	100	M12	12	5 x 7	69	1103.300
	500 x 630	60	20	200	40/35	200	200	M12	12	7 x 9	107	1103.500

Connecting Elements

EH 1101.300 - EH 1101.500

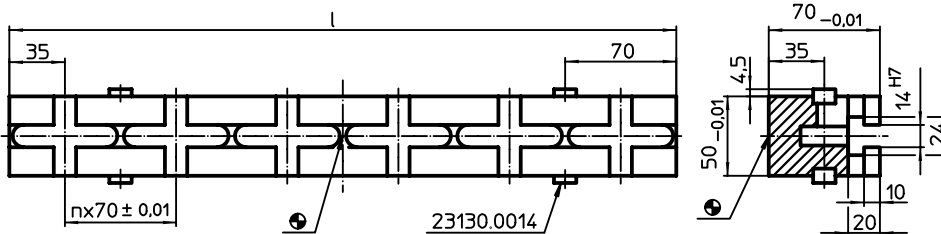


PRODUCT DESCRIPTION

Material

- Steel, hardened, ground

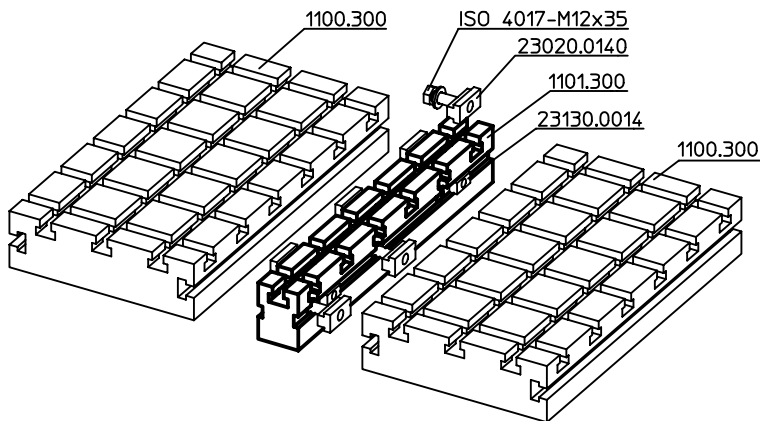
DRAWING



ORDER INFORMATION

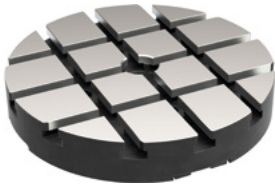
System	Dimensions l [mm]	Amount n	Number of T-slots	For base plates	[kg]	Art. No.
V70	420	5	1 x 6	1100.300	8,0	1101.300
	490	6	1 x 7	1100.400	9,3	1101.400
	630	8	1 x 9	1100.500	11,8	1101.500

APPLICATION EXAMPLE



Base Plates

EH 1102.100 - EH 1102.200



PRODUCT DESCRIPTION

Material

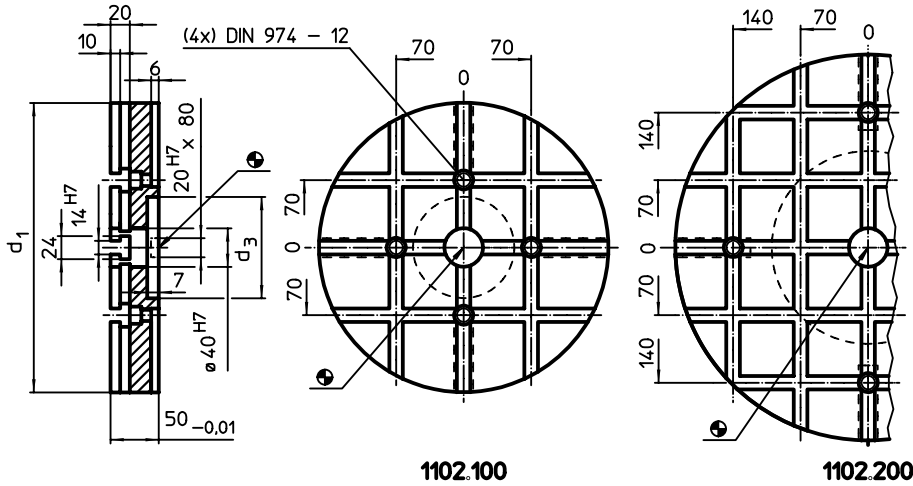
- Steel, hardened, ground

MORE INFORMATION

Notes


Special types on request.

DRAWING



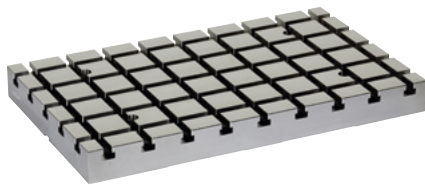
Slot spacing 70 ±0,01.

ORDER INFORMATION

System	Dimensions		Number of T-slots	 [kg]	Art. No.
	d ₁	d ₃			
	[mm]				
V70	300	105	3 x 3	21	1102.100
	400	200	5 x 5	37	1102.200

Base Plates • V70eco

EH 1200.300 - EH 1200.500



PRODUCT DESCRIPTION

V70eco base plates are a further development of the established V70 product line, optimized in quality and price.

They are fully compatible with the existing V70 T-slot system.

- Locating holes in quality H6 and slots in quality H8.
- Alignment of the base plate on the machine table by means of locating holes and/or centering slot.
- Fastening holes on a 100 mm pitch.
- High tensile tool steel.

Available options (delivery time approx. 10 working days):

- Additional mounting holes on a 63 mm pitch
- Additional mounting holes on a 125 mm pitch
- Exterior stop
- With connecting rings for Halder zero-point clamping system

Material

- Tool steel, high-strength

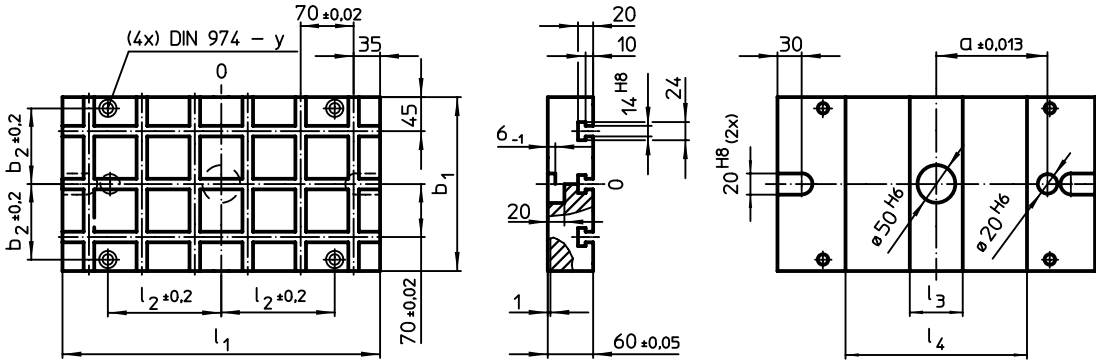
MORE INFORMATION

Notes

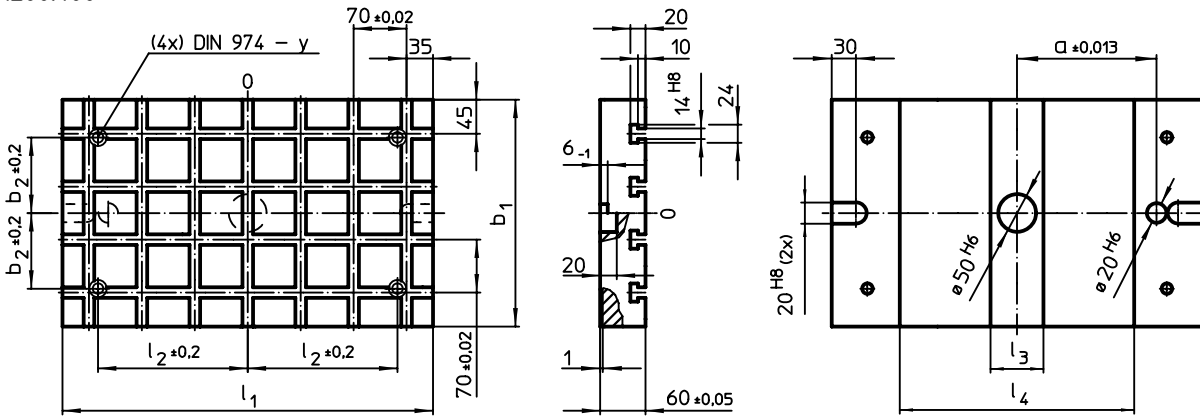
Special requests and larger dimensions are available on request.

DRAWING

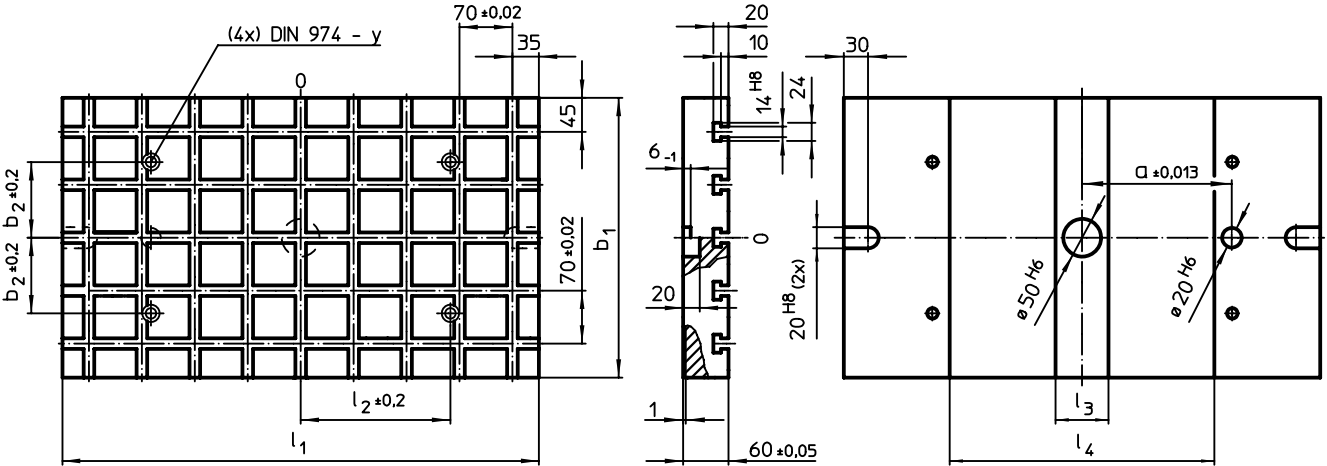
1200.300



1200.400



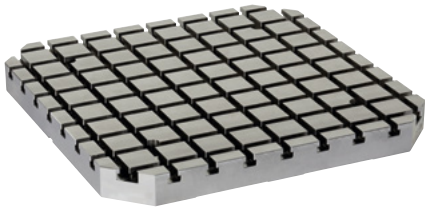
1200.500



ORDER INFORMATION

System	Dimensions								Number of connecting rings zero-point clamping system (optional)	Number of T-slots	[kg]	Art. No.
	l_1	b_1	a ± 0.013	b_2 ± 0.2	l_2 ± 0.2	l_3	l_4	y				
	[mm]											
V70	420	230	150	100	150	70	240	12	2	3 x 6	38	1200.300
	490	300	200	100	200	70	310	12	2	4 x 7	57	1200.400
	630	370	200	100	200	70	350	12	4	5 x 9	92	1200.500

Base Plates • V70eco, overall dimensions same as pallets DIN 55201
EH 1200.700 - EH 1203.500



PRODUCT DESCRIPTION

V70eco base plates are a further development of the established V70 product line, optimized in quality and price.

They are fully compatible with the existing V70 T-slot System.

- Locating holes in quality H6 and slots in quality H8.
- Alignment of the base plate on the machine table by means of locating holes and/or centering slot.
- Fastening holes on a 100 mm pitch.
- High tensile tool steel.

Available options (delivery time approx. 10 working days):

- a) Additional mounting holes on a 63 mm pitch
- b) Additional mounting holes on a 125 mm pitch
- c) Exterior stop
- d) With connecting rings for Halder zero-point clamping system

Material

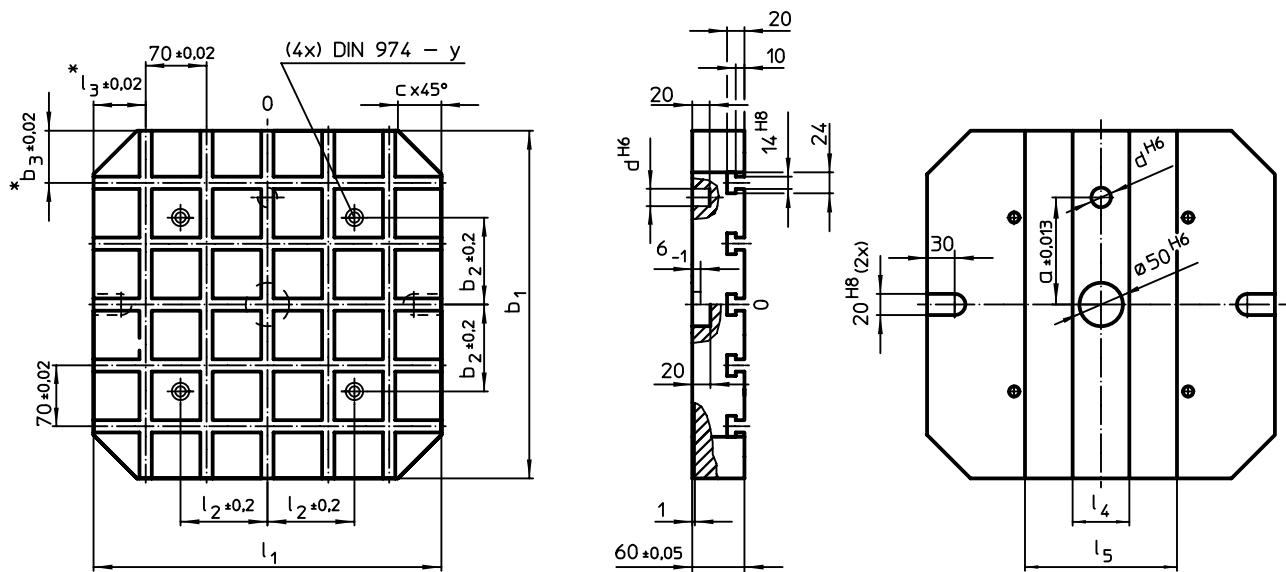
- Tool steel, high-strength

MORE INFORMATION

Notes

Special types on request.

DRAWING



* These tolerances are valid only for optional exterior stop type.

ORDER INFORMATION

System	Dimensions											Number of connecting rings zero-point clamping system (optional)	Number of T-slots	Art. No.		
	l_1	b_1	a	$b_2 \pm 0.2$	$b_3 \pm 0.02$	c	d	$l_2 \pm 0.2$	$l_3 \pm 0.02$	l_4	l_5				y	[kg]
V70	400	400	150	100	60	50	20	100	-	65	175	12	4	5 x 5	61	1200.700
	500	500	200	200	40	60	20	200	-	70	310	12	4	7 x 7	95	1200.800
	630	630	200	200	35	70	25	200	-	70	340	16	4	9 x 9	152	1200.900
	500	400	150	100	60	50	20	200	40	70	310	12	4	5 x 7	77	1203.300
	630	500	200	200	40	60	20	200	35	70	340	12	4	7 x 9	120	1203.500

Supporting Plates • including accessories
EH 1104.300 - EH 1104.500

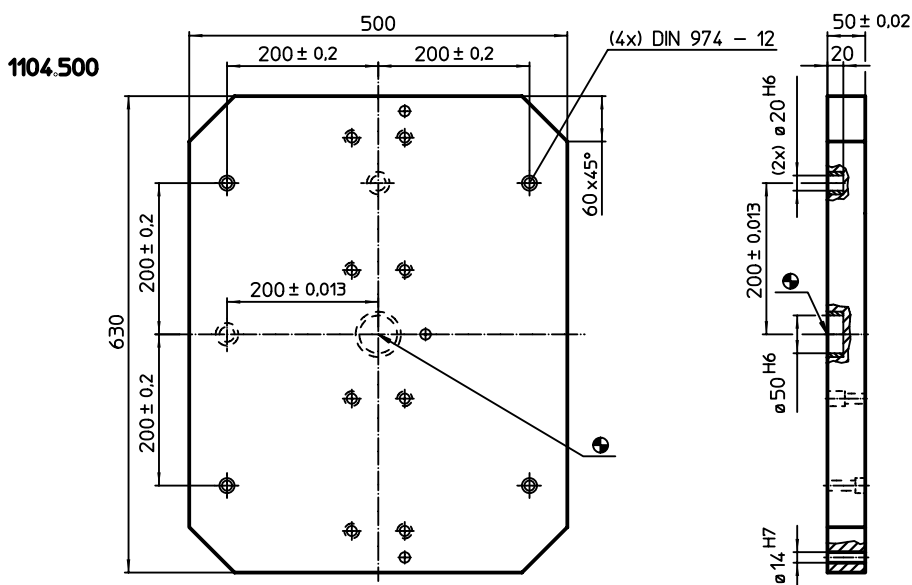
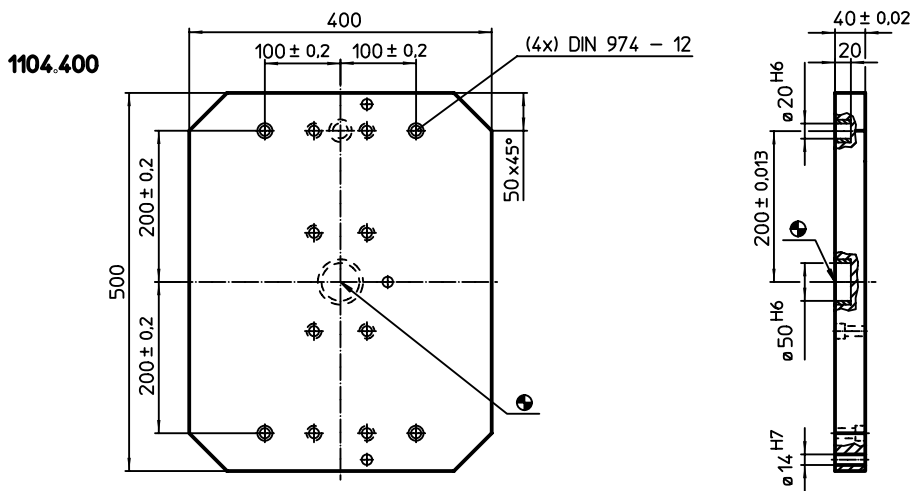
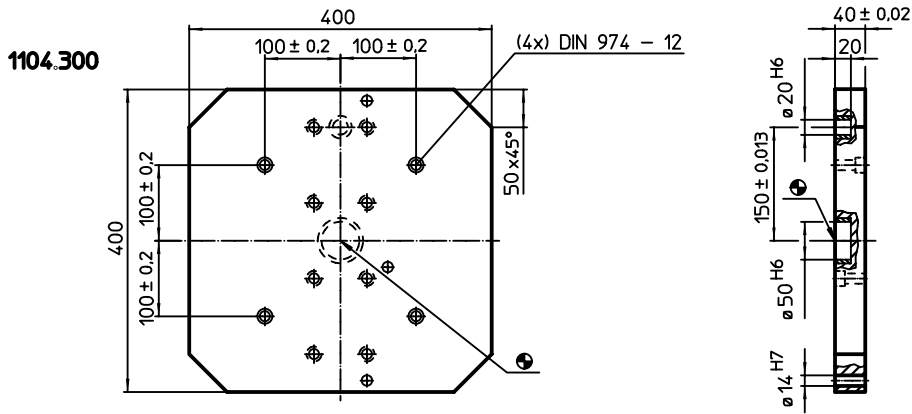


PRODUCT DESCRIPTION


Material

- Grey cast iron GG

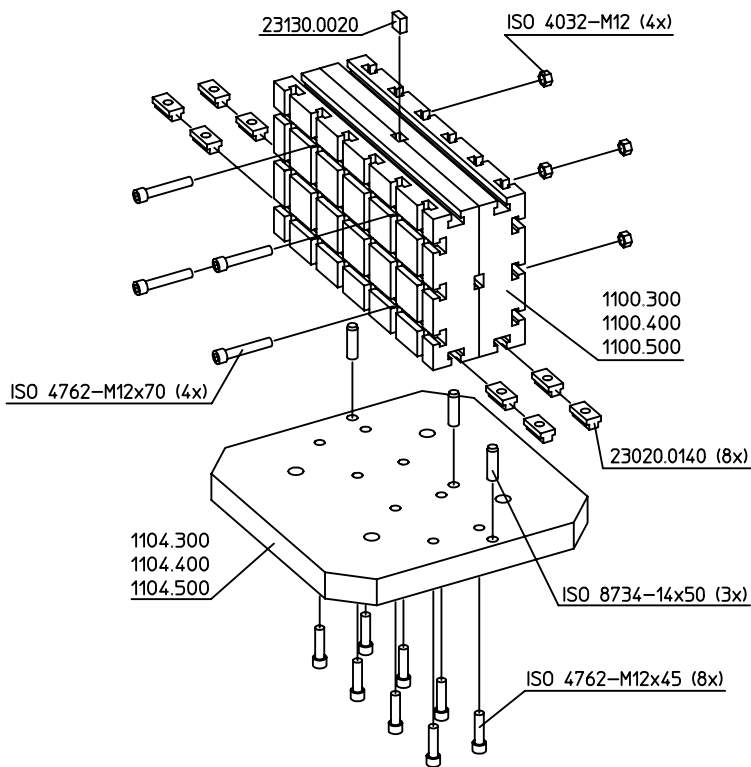
DRAWING



ORDER INFORMATION

System	 [kg]	Art. No.
V70	42	1104.300
	53	1104.400
	108	1104.500

APPLICATION EXAMPLE



Clamping Angles • modular design

EH 1104.700 - EH 1104.900

PRODUCT DESCRIPTION

The modular clamping angle is a unit consisting of a support plate and two base plates. Assembly or disassembly is possible within a very short time. The base plates used correspond to the respective standard version.

Material

Body

- Grey cast iron GG

Base plate

- Steel, case-hardened, ground



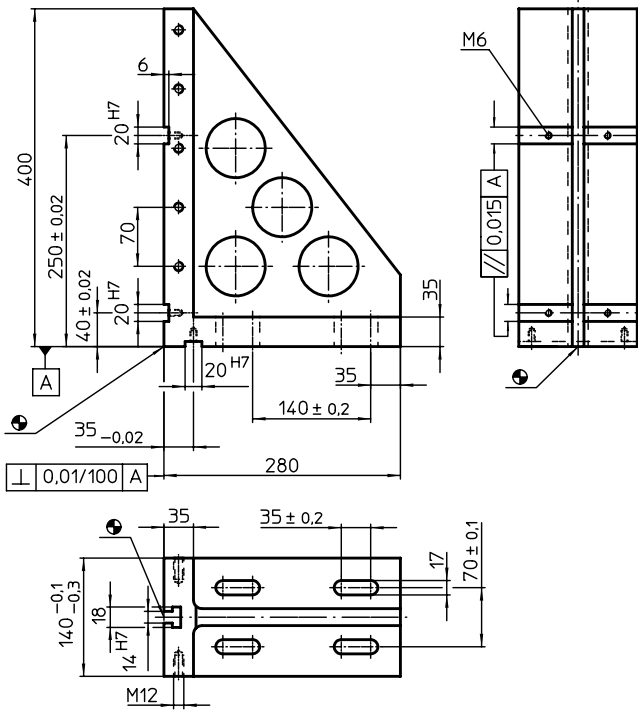


PRODUCT DESCRIPTION

Material

- Grey cast iron, phosphatized

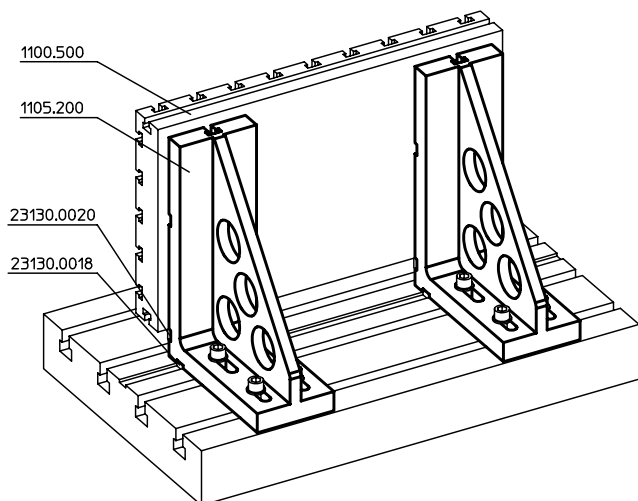
DRAWING



ORDER INFORMATION

System	 [kg]	Art. No.
V70	26	1105.200

APPLICATION EXAMPLE



Spacers

EH 1007.400 - EH 1108.300

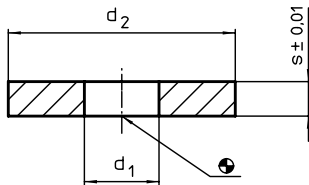


PRODUCT DESCRIPTION


Material

- Steel, case-hardened, ground

DRAWING



ORDER INFORMATION

System	d ₁	Dimensions		 [g]	Art. No.
		d ₂ [mm]	s		
V40	8,5	24,0	3	9	1007.400
		39,5	3	28	1007.500
		24,0	4	12	1007.600
		39,5	4	37	1007.700
		24,0	5	15	1007.800
		39,5	5	46	1007.900
V70/L12	13,0	39,5	3	26	1107.400
		59,5	3	63	1107.500
		39,5	4	35	1107.600
		59,5	4	85	1107.700
		39,5	5	44	1107.800
		59,5	5	107	1107.900
		39,5	10	85	1108.000
		59,5	10	208	1108.100
		39,5	20	170	1108.200
		59,5	20	416	1108.300

6

Mounting Blocks

EH 1010.100 - EH 1110.100

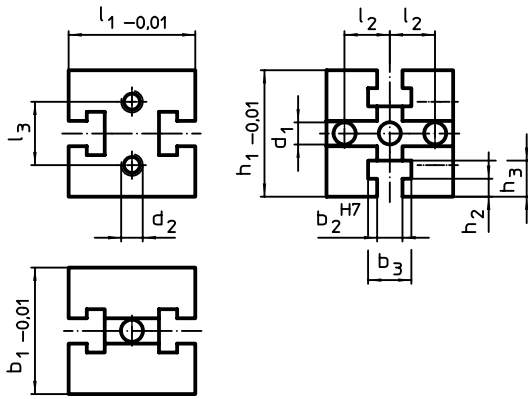


PRODUCT DESCRIPTION

Material

- Steel, case-hardened, ground

DRAWING

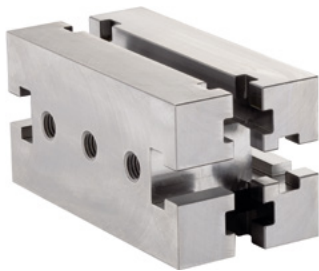


ORDER INFORMATION

System	Dimensions											Art. No.	
	b ₁	l ₁	b ₂	b ₃	l ₂	l ₃	h ₁	h ₂	h ₃	d ₁	d ₂		[g]
[mm]													
V40	40	40	10	17	13	–	40	6,5	12,5	8,25	–	280	1010.100
V70	70	70	14	24	25	35	70	10,0	20,0	12,25	M12	1700	1110.100

Mounting Blocks

EH 1010.200 - EH 1110.300

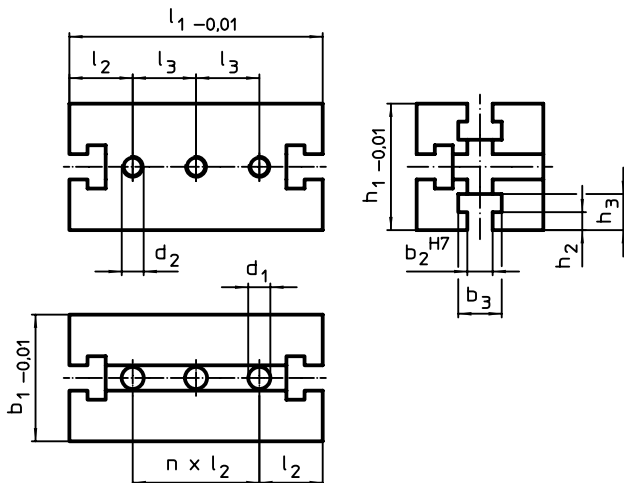


PRODUCT DESCRIPTION

Material

- Steel, case-hardened, ground

DRAWING



ORDER INFORMATION

System	Dimensions											Amount n	Art. No.	
	b ₁	l ₁	b ₂	b ₃	l ₂	l ₃	h ₁	h ₂	h ₃	d ₁	d ₂			[g]
[mm]														
V40	40	80	10	17	20	–	40	6,5	12,5	8,25	–	2	585	1010.200
		120	10	17	20	–	40	6,5	12,5	8,25	–	4	905	1010.300
V70	70	140	14	24	35	35	70	10,0	20,0	12,25	M12	2	3600	1110.200
		210	14	24	35	70	70	10,0	20,0	12,25	M12	4	5600	1110.300

Mounting Blocks
EH 1011.100 - EH 1111.100

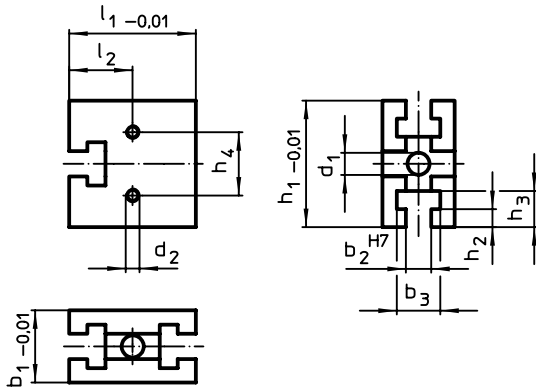


PRODUCT DESCRIPTION

Material

- Steel, case-hardened, ground

DRAWING



ORDER INFORMATION

System	Dimensions											Amount n	[g]	Art. No.
	b ₁	l ₁	b ₂	b ₃	l ₂	h ₁	h ₂	h ₃	h ₄	d ₁	d ₂			
V40	25	40	10	17	20	40	6,5	12,5	-	8,25	-	1	147	1011.100
V70	40	70	14	24	35	70	10,0	20,0	35	12,25	M12	1	810	1111.100

6

Mounting Blocks
EH 1011.200 - EH 1111.300

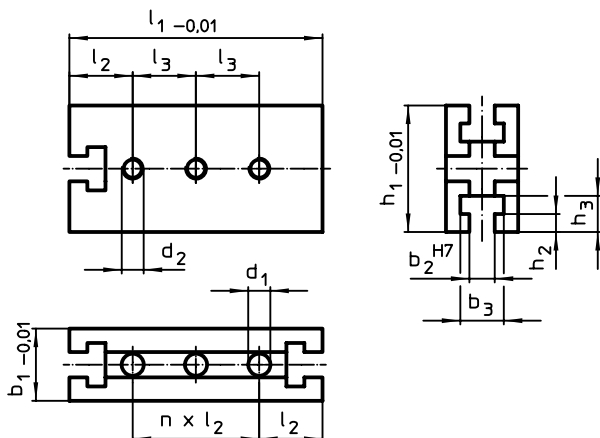


PRODUCT DESCRIPTION


Material

- Steel, case-hardened, ground

DRAWING

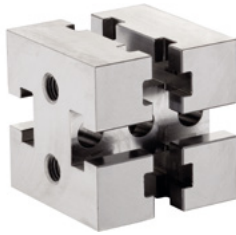


ORDER INFORMATION

System	Dimensions											Amount n	 [g]	Art. No.
	b ₁	l ₁	b ₂	b ₃	l ₂	l ₃	h ₁	h ₂	h ₃	d ₁	d ₂			
V40	25	40	10	17	20	–	80	6,5	12,5	8,25	–	3	340	1011.200
							120	6,5	12,5	8,25	–	5	530	1011.300
V70	40	70	14	24	35	35	140	10,0	20,0	12,25	M12	3	1880	1111.200
						70	210	10,0	20,0	12,25	M12	5	2950	1111.300

Mounting Blocks • V70eco

EH 1210.100



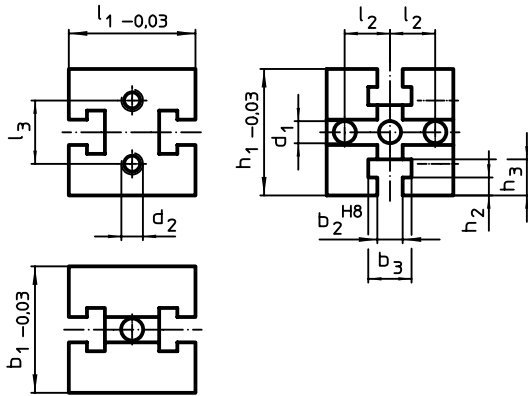
PRODUCT DESCRIPTION

V70eco mounting blocks are a further development of the established V70 product line, optimized in quality and price. They are fully compatible with the existing V70 T-slot system.


Material

- Tool steel, high-strength

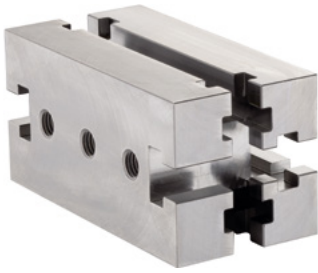
DRAWING



ORDER INFORMATION

System	Dimensions											 [g]	Art. No.
	b ₁	l ₁	b ₂	b ₃	h ₁	h ₂	h ₃	l ₂	l ₃	d ₁	d ₂		
V70	70	70	14	24	70	10	20	25	35	12,25	M12	1700	1210.100

Mounting Blocks • V70eco
EH 1210.200 - EH 1210.300



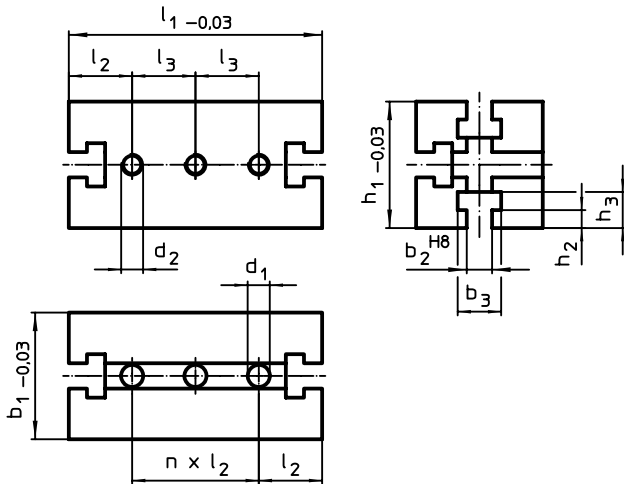
PRODUCT DESCRIPTION

V70eco mounting blocks are a further development of the established V70 product line, optimized in quality and price. They are fully compatible with the existing V70 T-slot system.

Material

- Tool steel, high-strength

DRAWING



ORDER INFORMATION

System	Dimensions													Art. No.
	b_1	l_1	b_2	b_3	h_1	h_2	h_3	l_2	l_3	n	d_1	d_2	[g]	
V70	70	140	14	24	70	10	20	35	35	2	12,25	M12	3600	1210.200
		210	14	24	70	10	20	35	70	4	12,25	M12	5600	1210.300

Mounting Blocks • V70eco
EH 1211.100



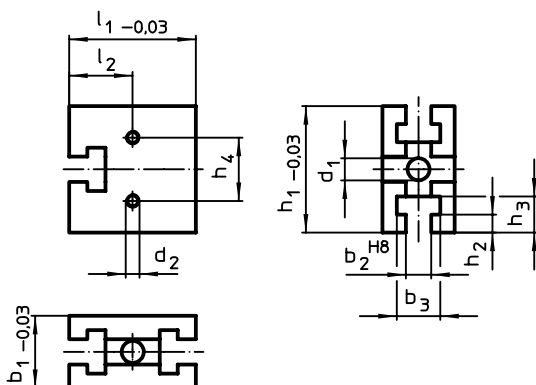
PRODUCT DESCRIPTION

V70eco mounting blocks are a further development of the established V70 product line, optimized in quality and price. They are fully compatible with the existing V70 T-slot system.

Material

- Tool steel, high-strength

DRAWING

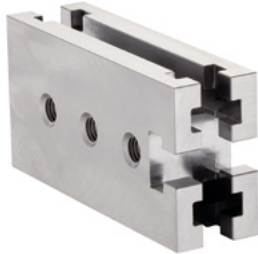


ORDER INFORMATION

System	Dimensions											[g]	Art. No.
	b ₁	l ₁	b ₂	b ₃	l ₂	h ₁	h ₂	h ₃	h ₄	d ₁	d ₂		
V70	40	70	14	24	35	70	10	20	35	12,25	M8	810	1211.100

Mounting Blocks • V70eco

EH 1211.200 - EH 1211.300



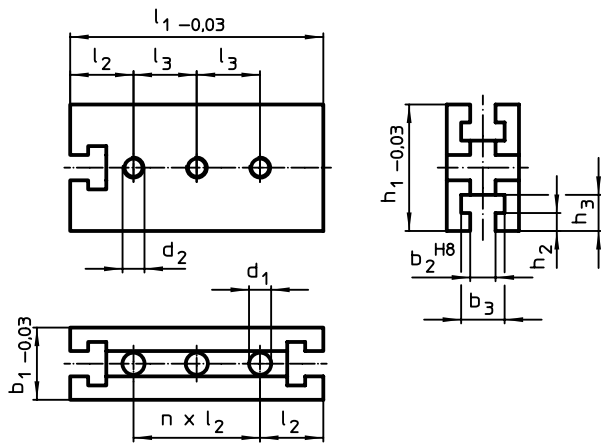
PRODUCT DESCRIPTION

V70eco mounting blocks are a further development of the established V70 product line, optimized in quality and price. They are fully compatible with the existing V70 T-slot system.

Material

- Tool steel, high-strength

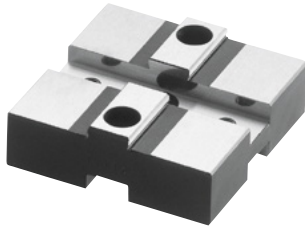
DRAWING



ORDER INFORMATION

System	Dimensions											[g]	Art. No.	
	b ₁	l ₁	b ₂	b ₃	h ₁	h ₂	h ₃	l ₂	l ₃	n	d ₁			d ₂
V70	40	140	14	24	70	10	20	35	35	2	12,25	M12	1880	1211.200
		210	14	24	70	10	20	35	70	4	12,25	M12	2950	1211.300

6

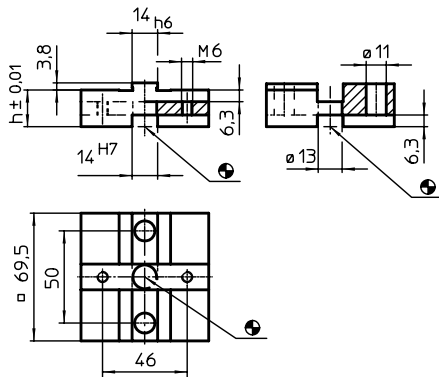


PRODUCT DESCRIPTION


Material

- Steel, case-hardened, ground

DRAWING



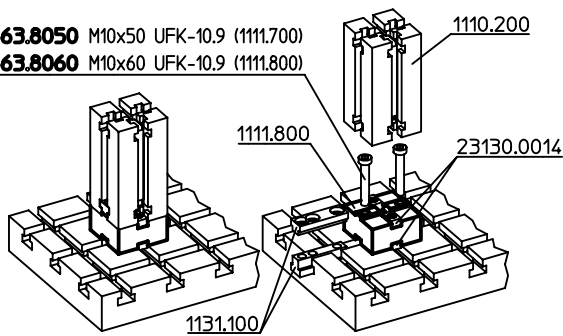
ORDER INFORMATION

System	Dimensions		Art. No.
	h [mm]		
V70	20	607	1111.700
	30	1130	1111.800

APPLICATION EXAMPLE

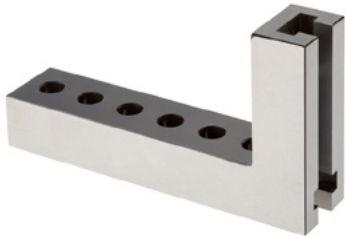
1863.8050 M10x50 UFK-10.9 (1111.700)

1863.8060 M10x60 UFK-10.9 (1111.800)



Slotted Clamping Angles

EH 1012.100 - EH 1112.400

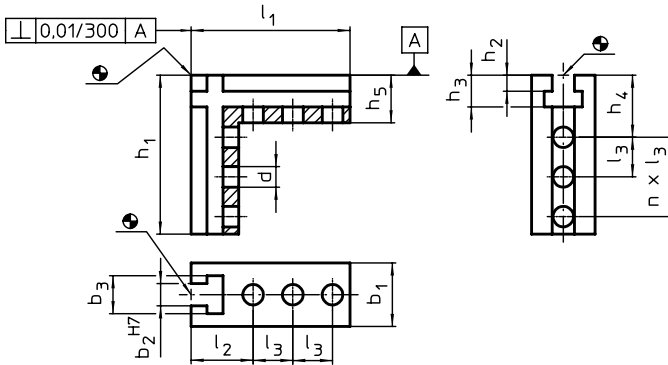


PRODUCT DESCRIPTION

Material

- Steel, case-hardened, ground

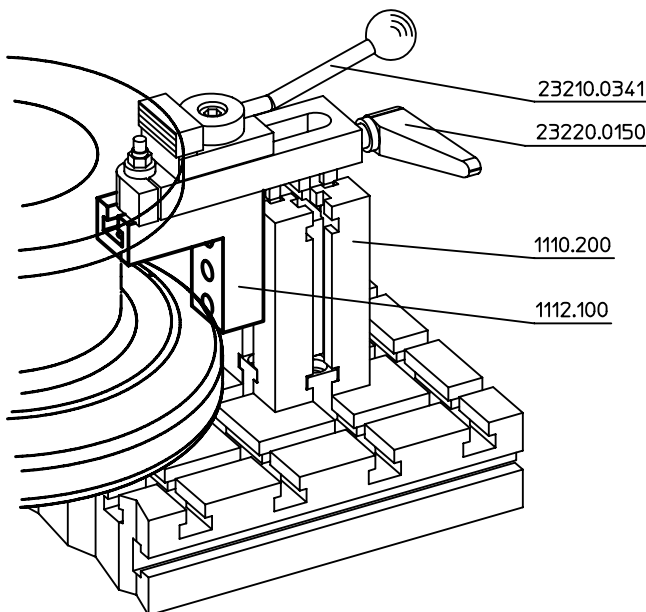
DRAWING



ORDER INFORMATION

System	Dimensions												Amount n	[g]	Art. No.
	b ₁	h ₁	l ₁	l ₂	l ₃	b ₂	b ₃	h ₂	h ₃	h ₄	h ₅	d			
V40	25	63	63	29	26	10	18	6,5	14,5	29	22	8,25	1	246	1012.100
		105	63	29	26	10	18	6,5	14,5	45	22	8,25	2	353	1012.200
	40	63	63	29	26	10	18	6,5	14,5	29	22	8,25	1	520	1012.300
		105	63	29	26	10	18	6,5	14,5	45	22	8,25	2	733	1012.400
V70	40	100	100	39	25	14	24	10,0	20,0	39	30	13,00	2	1000	1112.100
		180	100	39	25	14	24	10,0	20,0	39	30	13,00	5	1450	1112.200
	70	100	100	39	25	14	24	10,0	20,0	39	30	13,00	2	2150	1112.300
		180	100	39	25	14	24	10,0	20,0	39	30	13,00	5	3240	1112.400

APPLICATION EXAMPLE



Intermediate Elements

EH 1112.600 - EH 1112.800

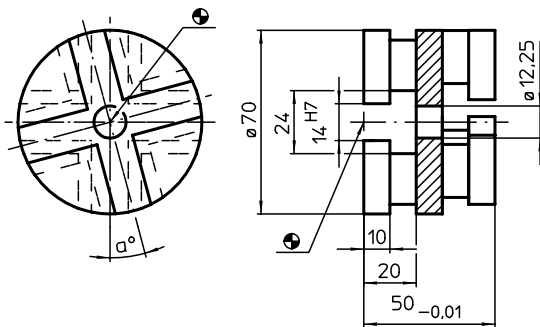


PRODUCT DESCRIPTION


Material

- Steel, case-hardened, ground

DRAWING



ORDER INFORMATION

System	α	 [g]	Art. No.
V70	15°	800	1112.600
	30°	800	1112.700
	45°	800	1112.800

6

Clamping Bars

EH 1013.600 - EH 1113.800

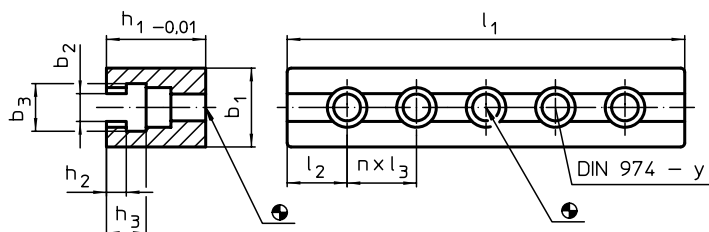


PRODUCT DESCRIPTION


Material

- Steel, case-hardened, ground

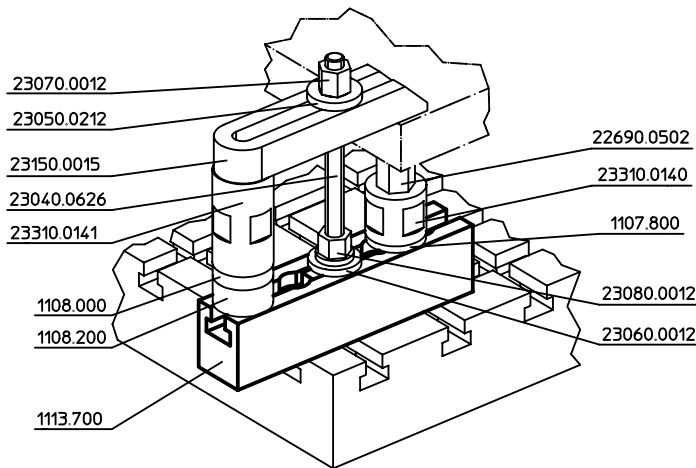
DRAWING



ORDER INFORMATION

System	Dimensions									Amount n	For screws [mm]	y [mm]		Art. No.
	l ₁	b ₁	b ₂	b ₃	h ₁	h ₂	h ₃	l ₂	l ₃					
V40	80	24	10,3	18	30	6,5	14,5	20,0	40	1	M 8	8	300	1013.600
	120	24	10,3	18	30	6,5	14,5	20,0	40	2	M 8	8	450	1013.700
	160	24	10,3	18	30	6,5	14,5	20,0	40	3	M 8	8	600	1013.800
V70	140	40	14,3	24	50	10,0	20,0	35,0	35	2	M12	12	1550	1113.600
	200	40	14,3	24	50	10,0	20,0	30,0	35	4	M12	12	2130	1113.700
	300	40	14,3	24	50	10,0	20,0	27,5	35	7	M12	12	3360	1113.800

APPLICATION EXAMPLE



Support Clamping Bars

EH 1114.000 - EH 1114.100

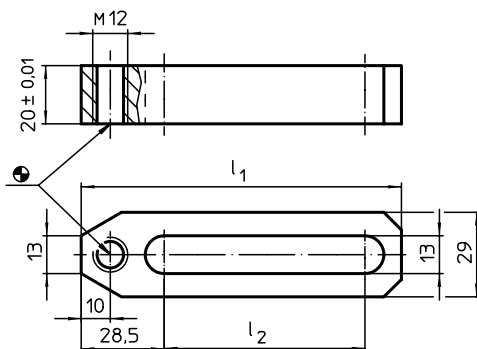


PRODUCT DESCRIPTION


Material

- Steel, case-hardened, ground

DRAWING



ORDER INFORMATION

System	Dimensions			Art. No.
	l ₁	l ₂		
V70/L12	110	69	300	1114.000
	150	109	400	1114.100

Stops

EH 1014.500 - EH 1114.500

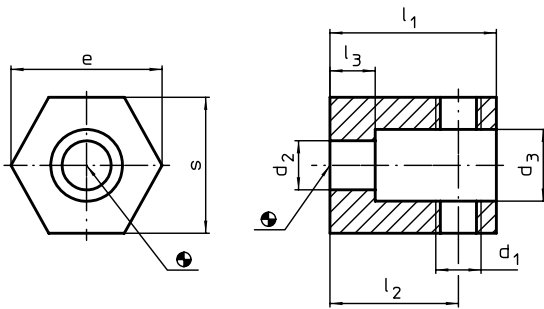


PRODUCT DESCRIPTION

Material

- Steel, blackened

DRAWING



ORDER INFORMATION

System	Dimensions								Art. No.	
	d ₁	d ₂	d ₃	l ₁	l ₂	l ₃	s	e		
V40	M 8	8,4	14	26	20	8	22	25,4	55	1014.500
V70/L12	M12	13,0	19	44	34	12	36	40,0	280	1114.500

6

Stops • cylindrical
EH 1115.100

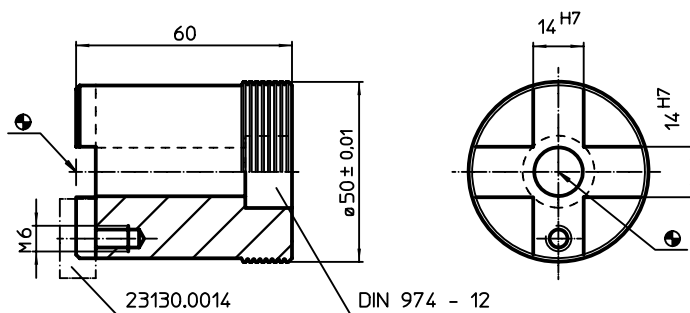


PRODUCT DESCRIPTION


Material

- Steel, case-hardened, ground

DRAWING



ORDER INFORMATION

System	 [g]	Art. No.
V70	750	1115.100

Stops

EH 1116.000 - EH 1116.100

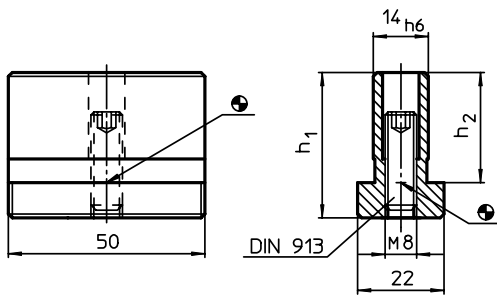


PRODUCT DESCRIPTION


Material

- Steel, case-hardened, ground

DRAWING



ORDER INFORMATION

System	Dimensions		 [g]	Art. No.
	h_1	h_2		
V70	37	28	215	1116.000
	57	48	310	1116.100

6

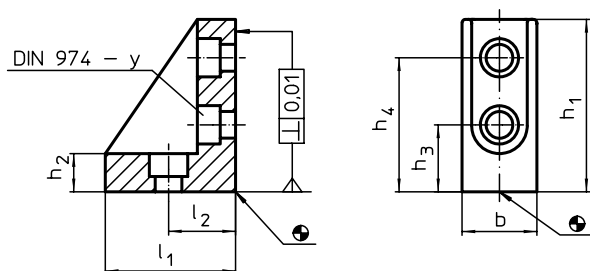


PRODUCT DESCRIPTION


Material

- Grey cast iron, phosphatized, ground

DRAWING



ORDER INFORMATION

System	Dimensions							For screws [mm]	y [mm]	 [g]	Art. No.
	b	l ₁	l ₂	h ₁ [mm]	h ₂	h ₃	h ₄				
V40	24,5	42	20	52	10,5	20	40	M 8	8	185	1020.300
	38,0	42	20	52	10,5	20	40	M 8	8	295	1021.500
V70	37,0	67	35	90	20,0	35	70	M12	12	870	1120.300
	66,0	67	35	90	20,0	35	70	M12	12	1710	1121.500

Thrust Angles

EH 1021.600 - EH 1021.700

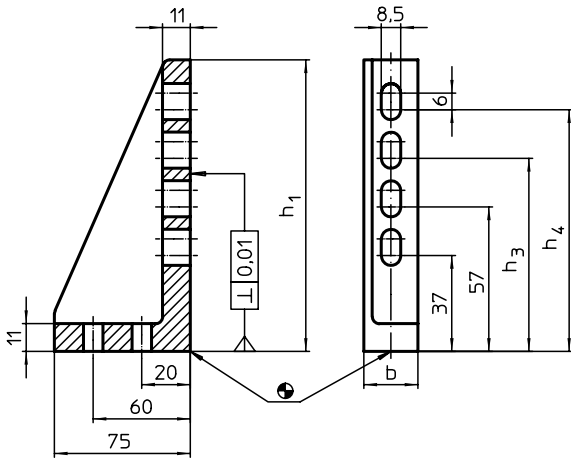


PRODUCT DESCRIPTION

Material

- Grey cast iron, phosphatized, ground

DRAWING



ORDER INFORMATION

System	b	Dimensions			Position of web	[g]	Art. No.
		h ₁	h ₃	h ₄			
V40	39	75	-	-	left	460	1021.600
		115	77	97	left	700	1021.700

6

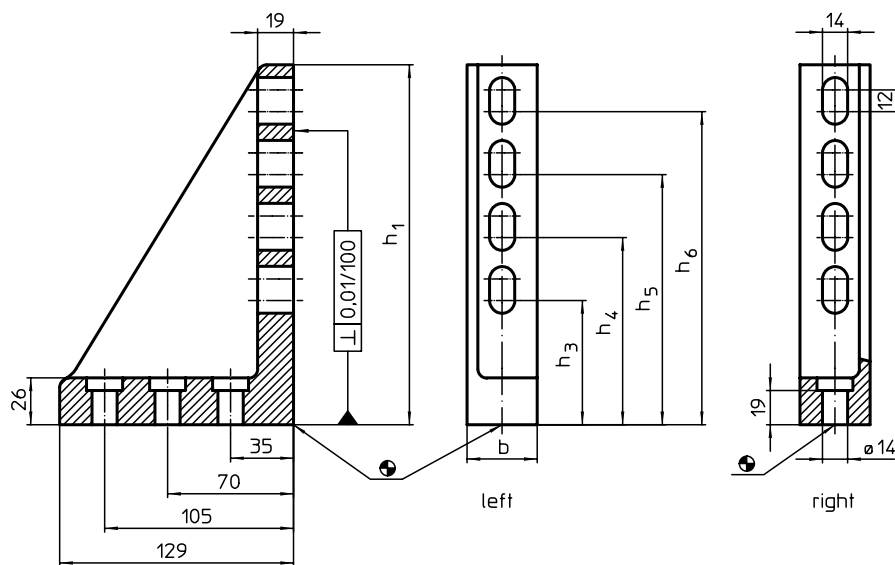


PRODUCT DESCRIPTION

Material

- Grey cast iron, phosphatized, ground

DRAWING



ORDER INFORMATION

System	b	h ₁	Dimensions				Position of web	[g]	Art. No.
			h ₃	h ₄	h ₅	h ₆			
[mm]									
V70	37	140	69	104	-	-	left	1470	1120.400
		200	69	104	139	174	left	1820	1120.500
		140	69	104	-	-	right	1470	1121.000
		200	69	104	139	174	right	1820	1121.100
	66	140	69	104	-	-	left	2970	1121.600
		200	69	104	139	174	left	3720	1121.700
		140	69	104	-	-	right	2970	1122.200
		200	69	104	139	174	right	3720	1122.300

T-Slot Centering Blocks

EH 1029.600 - EH 1129.600

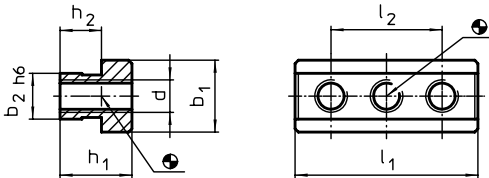


PRODUCT DESCRIPTION

Material

- Steel, case-hardened, ground

DRAWING



ORDER INFORMATION

System	Dimensions							[g]	Art. No.
	h_1	h_2	b_1	b_2 [mm]	d	l_1	l_2		
V40	13,5	8,5	15	10	M 6	38	26	36	1029.600
V70	22,0	12,7	22	14	M10	56	34	130	1129.600

Nuts for T-Slots

EH 1030.000 - EH 1030.300

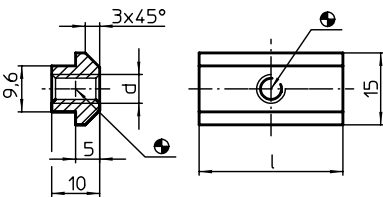


PRODUCT DESCRIPTION

Material

- Heat-treated steel, tempered, quality 10, black

DRAWING



ORDER INFORMATION

System	Dimensions		[g]	Art. No.
	l	d [mm]		
V40	15	M6	11	1030.000
		M8	9	1030.100
	30	M6	24	1030.200
		M8	23	1030.300

T-Blocks

EH 1130.400 - EH 1130.600

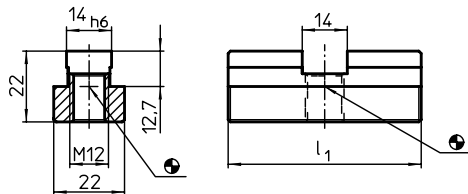


PRODUCT DESCRIPTION


Material

- Steel, case-hardened, ground

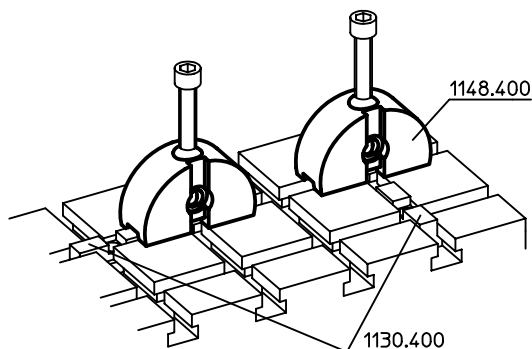
DRAWING



ORDER INFORMATION

System	Dimensions	 [g]	Art. No.
	l_1 [mm]		
V70	60	150	1130.400
	30	50	1130.600

APPLICATION EXAMPLE



T-Clamping Blocks

EH 1031.100 - EH 1131.200



PRODUCT DESCRIPTION

Material

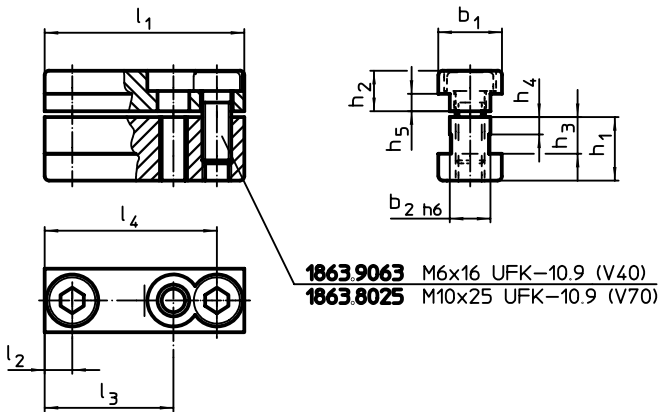
- Steel, case-hardened, ground

MORE INFORMATION

Further products

Wrenches → p. 743

DRAWING



ORDER INFORMATION

System	Dimensions											Art. No.	
	l_1	l_2	l_3	l_4	b_1	b_2	h_1	h_2	h_3	h_4	h_5		[g]
	[mm]												
V40	39,6	6,6	-	32,6	15	10	13,5	7,5	8,5	4	3,5	67	1031.100
	13,0	6,5	-	-	15	10	13,5	7,5	8,5	4	3,5	22	1031.200
	24,0	12,0	-	-	15	10	13,5	7,5	8,5	4	3,5	42	1031.300
V70	69,0	9,5	44,5	59,5	22	14	22,0	14,0	12,7	6	6,0	280	1131.100
	22,0	11,0	-	-	22	14	22,0	14,0	12,7	6	6,0	100	1131.200

T-Clamping Blocks
EH 1131.500 - EH 1131.700

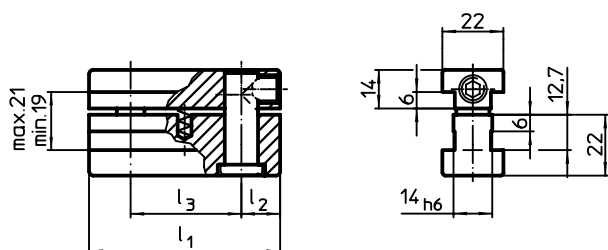


PRODUCT DESCRIPTION

Material

- Steel, case-hardened, ground

DRAWING



ORDER INFORMATION

System	Dimensions			[g]	Art. No.
	l_1	l_2 [mm]	l_3		
V70	23,5	13,5	-	110	1131.500
	40,0	14,0	12	180	1131.600
	69,0	14,5	40	320	1131.700



Wrenches

EH 1032.100 - EH 1132.100

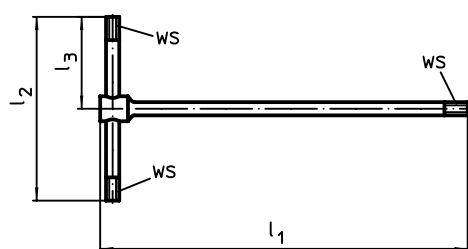


PRODUCT DESCRIPTION

Material

- Steel, case-hardened

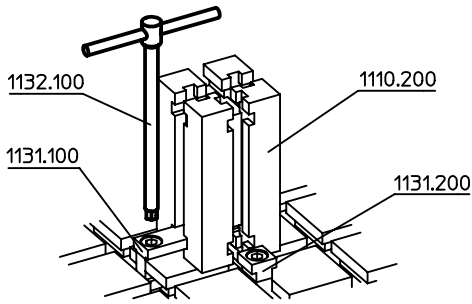
DRAWING



ORDER INFORMATION

System	Dimensions			WS [mm]	Suitable for [mm]	[g]	Art. No.
	l_1	l_2 [mm]	l_3				
V40	210	105	52,5	5	M 6	100	1032.100
V70	250	125	62,5	8	M10	200	1132.100

APPLICATION EXAMPLE



Butt Straps

EH 1132.500 - EH 1132.800

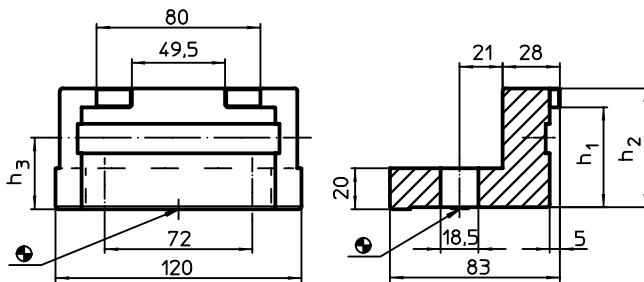


PRODUCT DESCRIPTION

Material

- Heat-treated steel, tempered, blackened

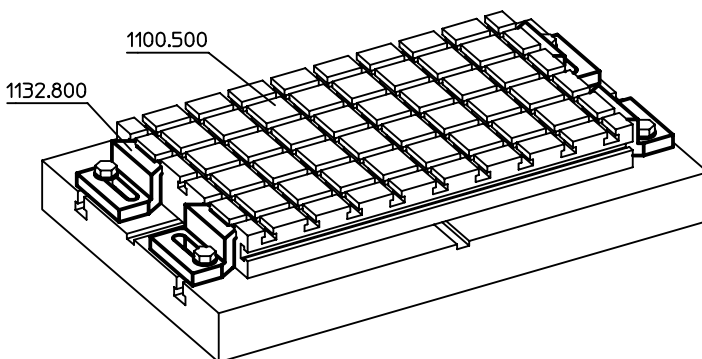
DRAWING



ORDER INFORMATION

System	Dimensions			Art. No.
	h_1	h_2 [mm]	h_3	
V70	39,7	49	-	1610
	49,7	59	35	1650

APPLICATION EXAMPLE



Clamping Heads

EH 1132.900

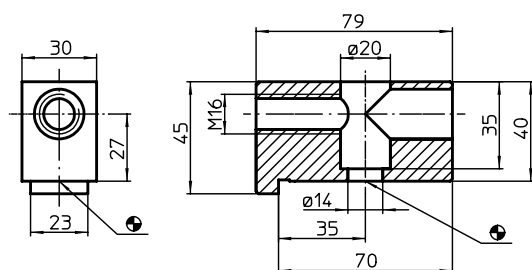


PRODUCT DESCRIPTION


Material

- Steel, blackened

DRAWING



ORDER INFORMATION

System		Art. No.
V70	550	1132.900

6

Clamping Bars

EH 1133.000 - EH 1133.200

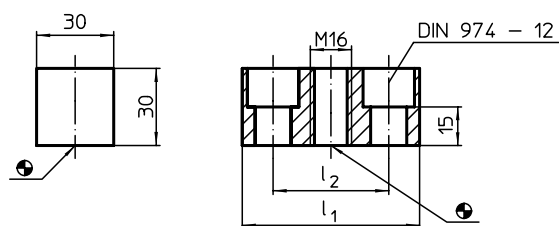


PRODUCT DESCRIPTION


Material

- Steel, blackened

DRAWING



ORDER INFORMATION

System	Dimensions			Art. No.
	l_1	l_2		
V70	69	45	330	1133.000
	94	70	500	1133.200

Clamping Vices • moveable jaw

EH 1137.300



PRODUCT DESCRIPTION

Max. torque 140 Nm, clamping power F = 30 kN

Material

- Steel, case-hardened, ground

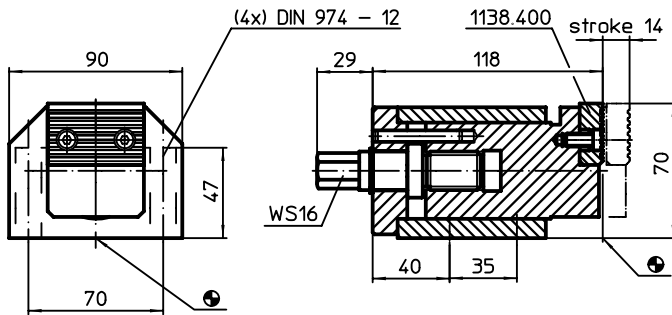
MORE INFORMATION

Further products


Clamping Vices → p. 443

Clamping Vices, fixed jaw → p. 746
 Clamping Vices, replacement jaw, soft → p. 747
 Clamping Vices, replacement jaw, ribbed/flat → p. 747

DRAWING



ORDER INFORMATION

System	 [g]	Art. No.
V70	4600	1137.300

Clamping Vices • fixed jaw

EH 1137.400



PRODUCT DESCRIPTION

Material

- Steel, case-hardened, ground

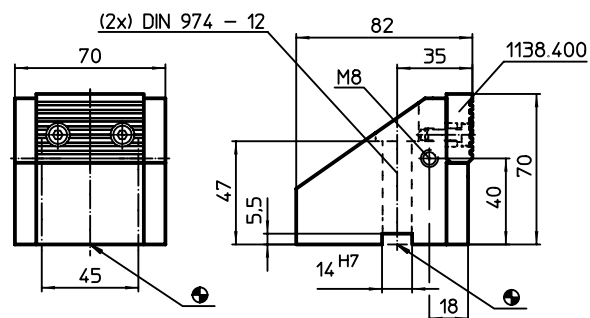
MORE INFORMATION

Further products


Clamping Vices → p. 443

Clamping Vices, moveable jaw → p. 746
 Clamping Vices, replacement jaw, soft → p. 747
 Clamping Vices, replacement jaw, ribbed/flat → p. 747

DRAWING



ORDER INFORMATION

System	 [g]	Art. No.
V70	2000	1137.400

Clamping Vices • replacement jaw, soft
EH 1138.100



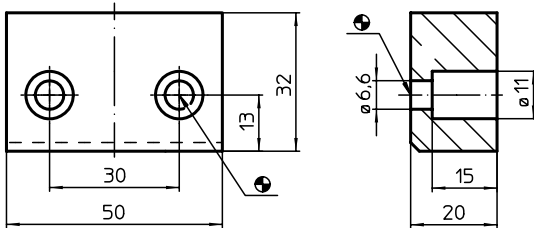
PRODUCT DESCRIPTION

- Material**
- Aluminium Al


MORE INFORMATION

Further products
Clamping Vices → p. 443

DRAWING



ORDER INFORMATION

System	 [g]	Art. No.
V70	75	1138.100

Clamping Vices • replacement jaw, ribbed/flat
EH 1138.400



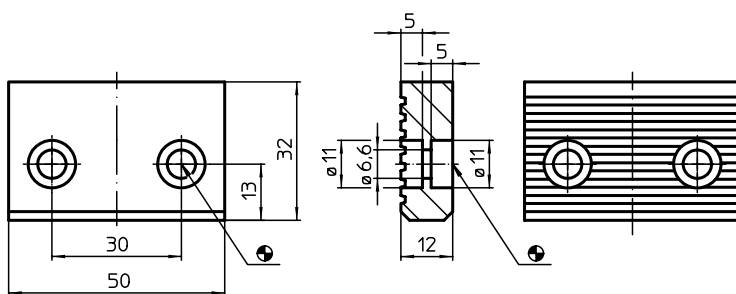
PRODUCT DESCRIPTION

- Material**
- Steel, case-hardened, blackened


MORE INFORMATION

Further products
Clamping Vices → p. 443

DRAWING



ORDER INFORMATION

System	 [g]	Art. No.
V70	125	1138.400

Wrenches

EH 1139.400 - EH 1139.500

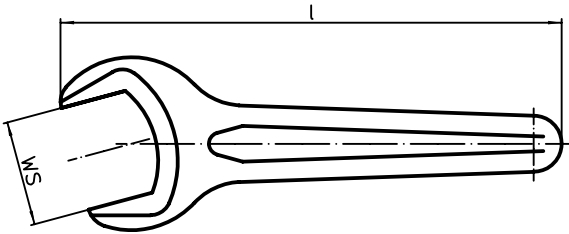


PRODUCT DESCRIPTION

Material

- Heat-treated steel, heat treated

DRAWING



ORDER INFORMATION

System	WS	Dimensions	[g]	Art. No.
	[mm]	l [mm]		
V70	36	300	390	1139.400
	46	300	960	1139.450
	55	300	930	1139.500

6

Locating Pins

EH 1040.300 - EH 1040.700

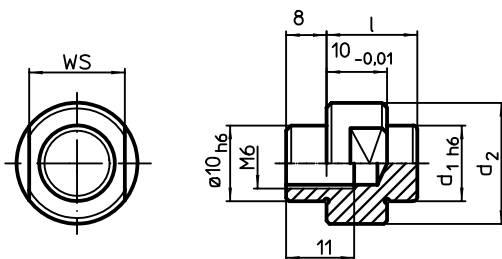


PRODUCT DESCRIPTION

Material

- Steel, case-hardened, ground

DRAWING



ORDER INFORMATION

System	Dimensions			WS	[g]	Art. No.
	d ₁	d ₂ [mm]	l	[mm]		
V40	6	15	14	13	17	1040.300
	10	19	14	13	23	1040.500
	13	19	15	17	29	1040.700

Locating Pins
EH 1140.300 - EH 1141.500

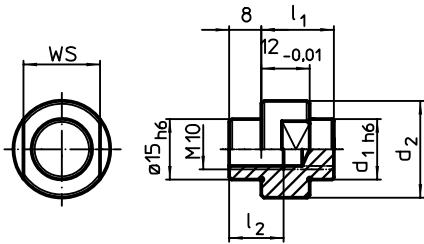


PRODUCT DESCRIPTION

Material

- Steel, case-hardened, ground

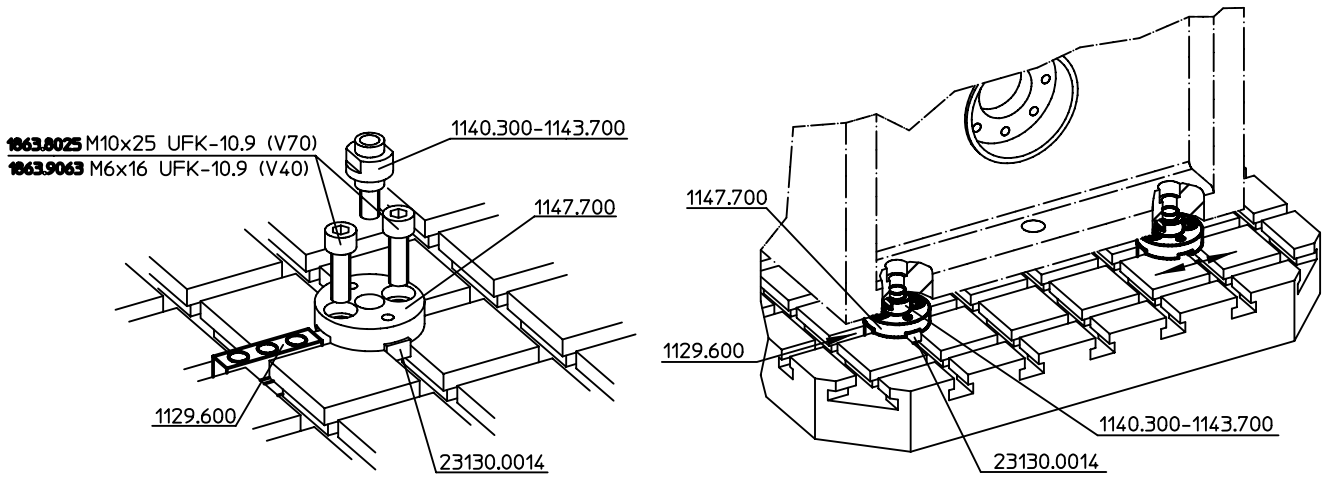
DRAWING



ORDER INFORMATION

System	Dimensions				WS	[g]	Art. No.
	d ₁	d ₂	l ₁	l ₂			
V70	4	19	16	13,5	15	30	1140.300
	5	19	16	13,5	15	30	1140.400
	6	19	16	13,5	15	30	1140.500
	8	19	17	13,5	15	28	1140.600
	10	19	17	13,5	15	30	1140.700
	12	19	18	13,5	15	30	1140.800
	14	24	18	13,5	19	30	1140.900
	15	24	18	[throughgoing thread]	19	50	1141.000
	16	24	18	[throughgoing thread]	19	50	1141.100
	18	29	19	[throughgoing thread]	22	70	1141.200
	20	29	19	[throughgoing thread]	22	70	1141.300
	22	34	20	[throughgoing thread]	27	100	1141.400
24	34	20	[throughgoing thread]	27	100	1141.500	

APPLICATION EXAMPLE



Locating Pins

EH 1141.600 - EH 1143.700

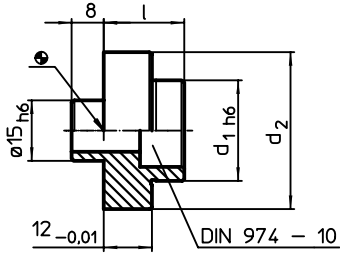


PRODUCT DESCRIPTION

Material

- Steel, case-hardened, ground

DRAWING



ORDER INFORMATION

System	Dimensions			Art. No.	
	d ₁	d ₂ [mm]	l		[g]
V70	25	39	20	100	1141.600
	26	39	20	110	1141.700
	28	39	20	110	1141.800
	30	49	22	200	1141.900
	32	49	22	200	1142.000
	34	49	22	200	1142.100
	35	49	22	200	1142.200
	36	49	22	210	1142.300
	38	49	22	230	1142.400
	40	59	24	330	1142.500
	42	59	24	340	1142.600
	44	59	24	350	1142.700
	45	59	24	360	1142.800
	46	59	24	370	1142.900
	48	59	24	380	1143.000
	50	69	26	520	1143.100
	52	69	26	530	1143.200
	54	69	26	550	1143.300
	55	69	26	560	1143.400
	56	69	26	580	1143.500
58	69	26	600	1143.600	
60	69	26	610	1143.700	



PRODUCT DESCRIPTION

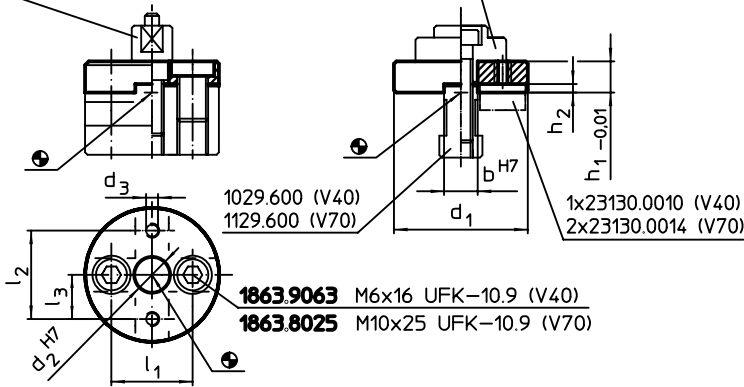
Material

- Steel, case-hardened, ground

DRAWING

locating pin no. 1040.300–1040.700 (V40)
locating pin no. 1140.300–1141.500 (V70)

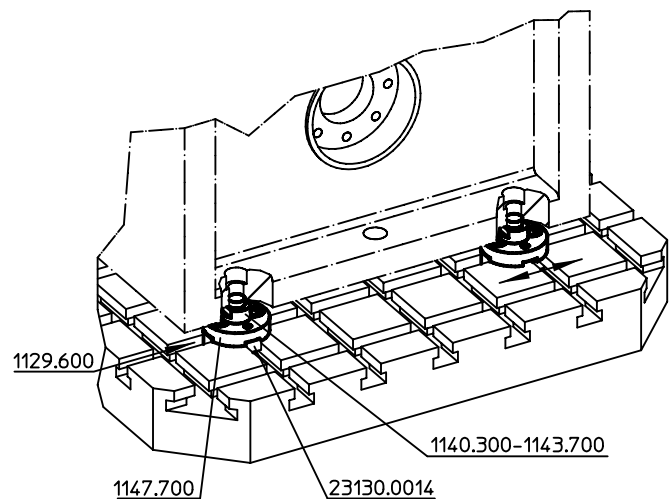
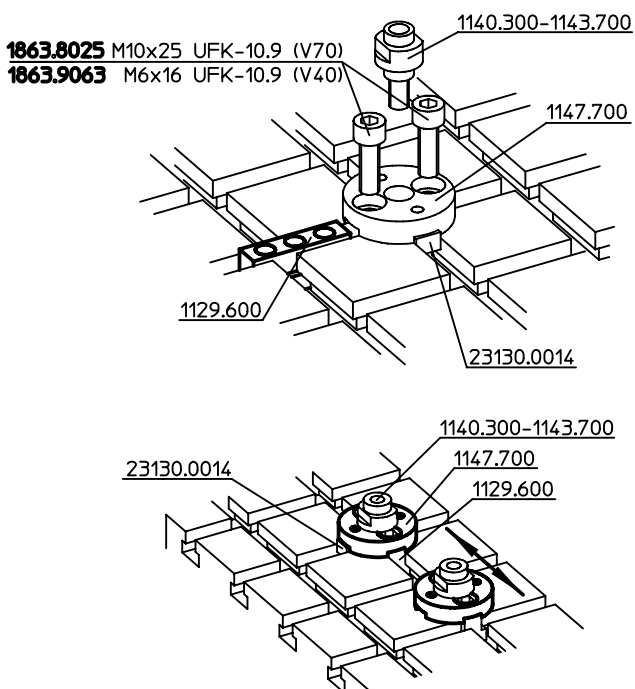
locating pin no. 1141.600–1143.700 (V70)



ORDER INFORMATION

System	Dimensions									Art. No.	
	d ₁	d ₂	d ₃	h ₁	h ₂	b	l ₁	l ₂	l ₃		[g]
V40	40	10	M4	15	2,6	10	26	–	16	135	1047.700
V70	56	15	M6	13	3,5	14	34	37	–	160	1147.700

APPLICATION EXAMPLE



Support Clamping Bars

EH 1047.800 - EH 1147.800

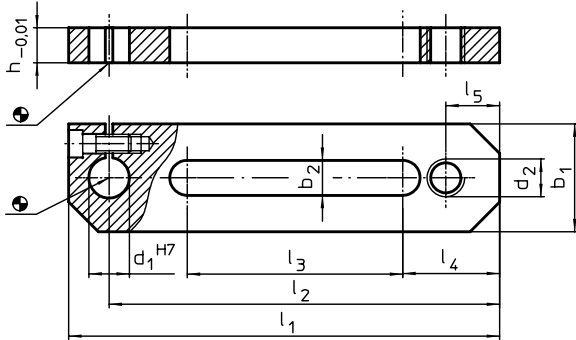


PRODUCT DESCRIPTION

Material

- Steel, case-hardened, ground

DRAWING



ORDER INFORMATION

System	Dimensions										Art. No.	
	b ₁	b ₂	d ₁	d ₂	h	l ₁	l ₂	l ₃	l ₄	l ₅		[g]
V40	25	8,5	10	M 8	15	100	88	45	23	12	215	1047.800
V70	40	13,0	15	M12	13	160	145	80	36	20	470	1147.800

Supporting Plates

EH 1047.900 - EH 1147.900

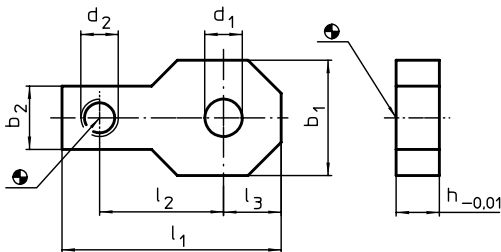


PRODUCT DESCRIPTION

Material

- Steel, case-hardened, ground

DRAWING



ORDER INFORMATION

System	Dimensions								Art. No.	
	h	d ₁	d ₂	b ₁	b ₂	l ₁	l ₂	l ₃		[g]
V40	10	8,5	M 8	25	18	51	28	12,5	74	1047.900
V70	15	13,0	M12	40	22	76	43	20,0	230	1147.900

V-Blocks

EH 1048.200 - EH 1148.300

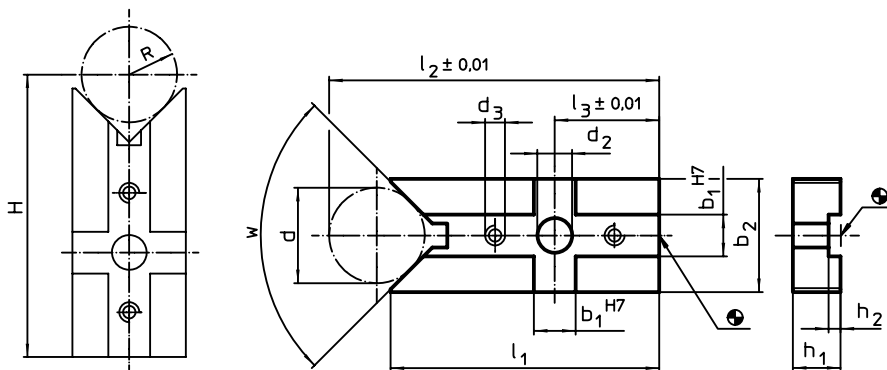
PRODUCT DESCRIPTION

Material

- Steel, case-hardened, ground



DRAWING

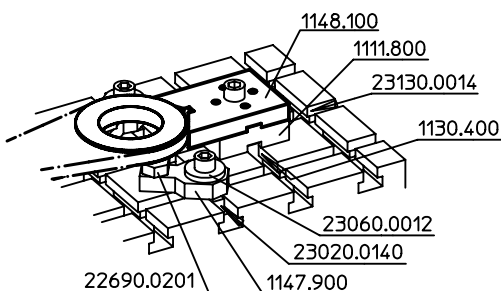


- $H = (R \times 1,414) + 49,497$ [1048.200]
- $H = (R \times 1,414) + 48,996$ [1048.300]
- $H = (R \times 1,155) + 77,025$ [1148.000]
- $H = (R \times 1,155) + 81,204$ [1148.100]
- $H = (R \times 1,414) + 72,872$ [1148.200]
- $H = (R \times 1,414) + 73,159$ [1148.300]

ORDER INFORMATION

System	Dimensions												w	[g]	Art. No.
	b ₁	d	b ₂	d ₂	d ₃	l ₁	l ₂	l ₃	h ₁	h ₂	d min.	d max.			
[mm]															
V40	10	20	25	6,6	M4	60	73,64	20	10	2,6	8	25	90°	94	1048.200
		30	38	6,6	M4	66	85,21	20	10	2,6	8	44	90°	158	1048.300
V70	14	32	38	13,0	M6	87	111,50	35	16	4,0	18	66	120°	330	1148.000
		62	68	13,0	M6	100	148,00	35	16	4,0	18	126	120°	690	1148.100
		32	38	13,0	M6	90	111,50	35	16	4,0	14	44	90°	325	1148.200
		62	68	13,0	M6	104	148,00	35	16	4,0	14	83	90°	695	1148.300

APPLICATION EXAMPLE



Locating Segments

EH 1048.400 - EH 1148.400

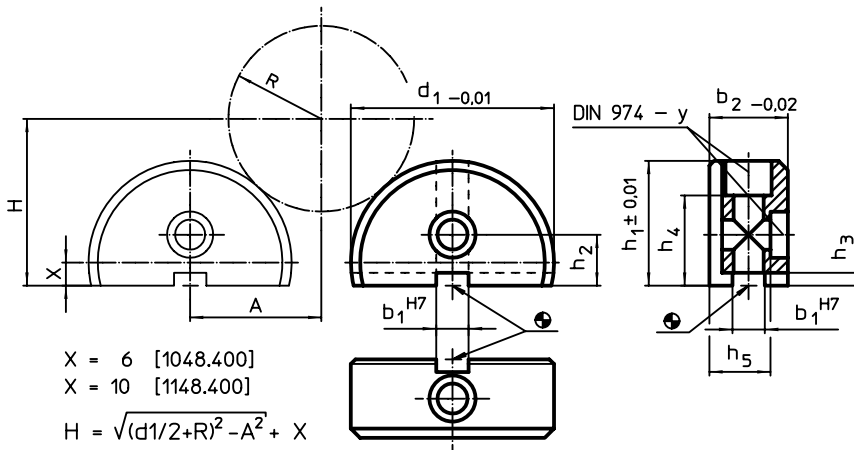


PRODUCT DESCRIPTION

Material

- Steel, case-hardened, ground

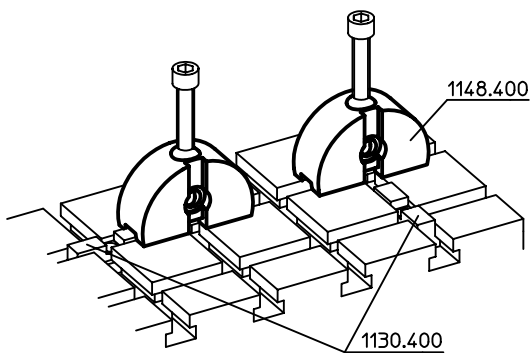
DRAWING



ORDER INFORMATION

System	Dimensions								For screws	y	[g]	Art. No.
	b ₁	b ₂	d ₁	h ₁	h ₂	h ₃	h ₄	h ₅				
V40	10	20	50	31	13	2,6	21	17,0	M 6	6	160	1048.400
V70	14	34	88	54	22	6,0	39	26,5	M12	12	830	1148.400

APPLICATION EXAMPLE



V-Blocks

EH 1048.500 - EH 1148.500

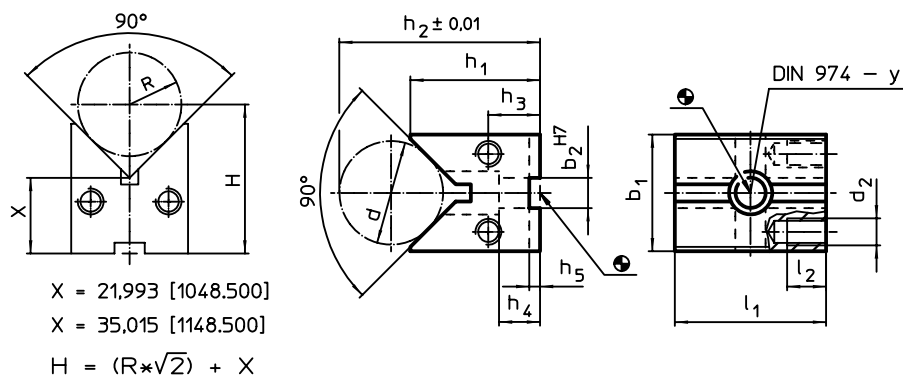


PRODUCT DESCRIPTION

Material

- Steel, case-hardened, ground

DRAWING

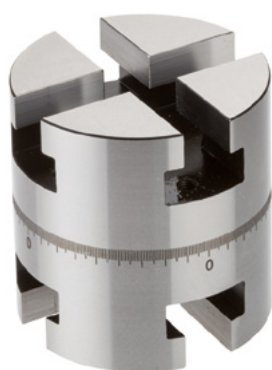


ORDER INFORMATION

System	Dimensions														For screws	y	Art. No.
	l_1	b_1	b_2	h_1	h_2	h_3	h_4	h_5	l_2	d	d_2	d min.	d max.	[mm]			
[mm]																	
V40	40	32	10	36	48,55	14,5	13	2,6	10	22	M 8	8	35	M 6	6	343	1048.500
V70	70	54	14	60	83,30	24,0	19	5,0	18	40	M12	12	67	M12	12	1640	1148.500

Adjustable Rotating Elements

EH 1048.600 - EH 1148.600

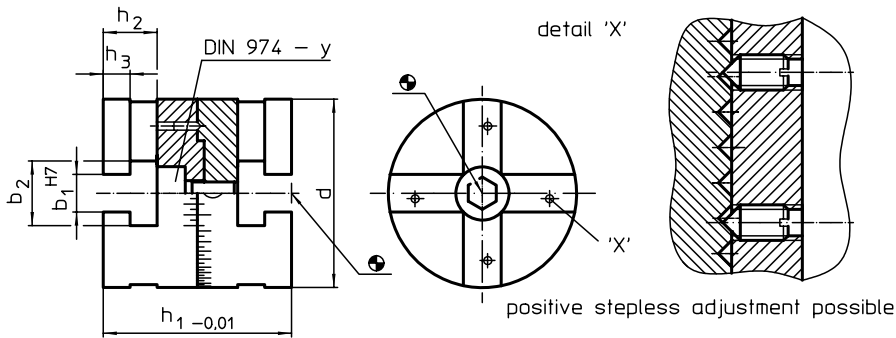


PRODUCT DESCRIPTION

Material

- Steel, case-hardened, ground

DRAWING



ORDER INFORMATION

System	Dimensions							[g]	Art. No.
	d	b ₁	b ₂	h ₁	h ₂	h ₃	y		
V40	40	10	17	40	12,5	6,5	6	270	1048.600
V70	70	14	24	70	20,0	10,0	12	1350	1148.600

Positioning Clamping Bars

EH 1149.000

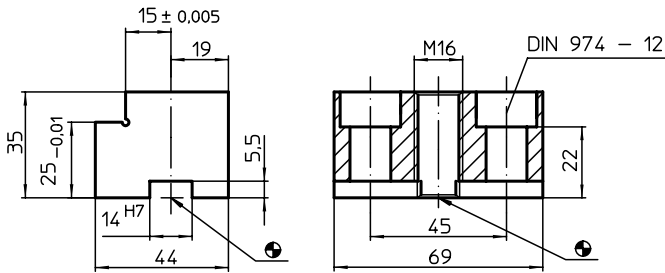


PRODUCT DESCRIPTION

Material

- Steel, case-hardened, ground

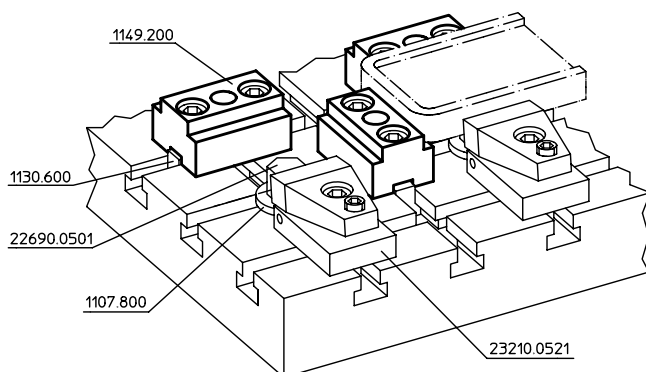
DRAWING



ORDER INFORMATION

System	[g]	Art. No.
V70	660	1149.000

APPLICATION EXAMPLE



Positioning Clamping Bars • two-sided

EH 1049.200 - EH 1149.200

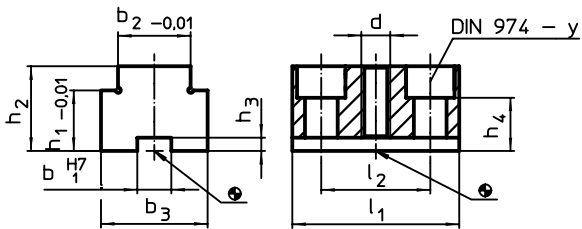


PRODUCT DESCRIPTION

Material

- Steel, case-hardened, ground

DRAWING



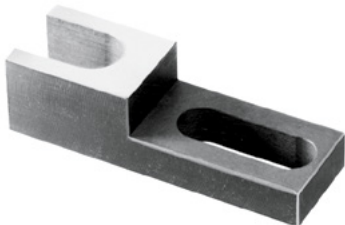
ORDER INFORMATION

System	Dimensions										y	For screws	[g]	Art. No.
	b ₁	b ₂	b ₃	h ₁	h ₂	h ₃	h ₄	l ₁	l ₂	d				
V40	10	20	28	20	23	2,6	13	40	26	M 8	6	M 6	155	1049.200
V70	14	30	44	25	35	5,5	22	69	45	M12	12	M12	580	1149.200



Fixed Drilling Supports

EH 1162.000 - EH 1162.300

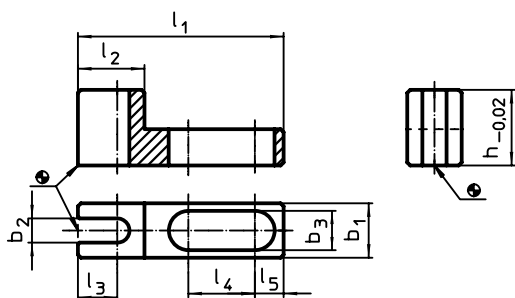


PRODUCT DESCRIPTION

Material

- Steel, case-hardened, ground

DRAWING



ORDER INFORMATION

System	Dimensions										[g]	Art. No.
	l ₁	l ₂	l ₃	l ₄	l ₅	b ₁	b ₂	b ₃	h			
V70/L12	68	22	13	22	9,5	18	8	13	25	120	1162.000	
	88	38	20	26	9,5	28	16	13	25	210	1162.100	
	98	40	20	31	9,5	38	24	13	25	390	1162.200	
	108	45	20	37	11,5	48	35	17	25	480	1162.300	

Fixed Drilling Supports • adjustable

EH 1163.000 - EH 1163.300

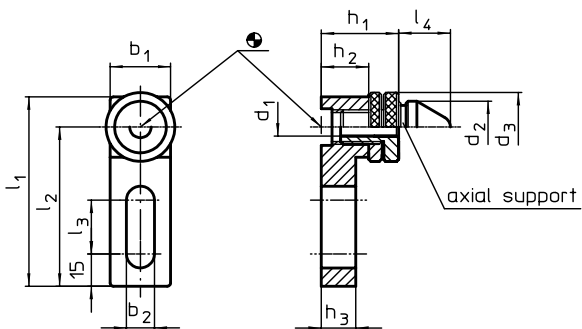


PRODUCT DESCRIPTION

Material

- Steel, case-hardened, ground

DRAWING



ORDER INFORMATION

System	Dimensions												[g]	Art. No.
	b ₁	b ₂	d ₁	d ₂	d ₃	l ₁	l ₂	l ₃	l ₄	h ₁	h ₂	h ₃		
V70/L12	28	13	9,9	24	32	88	74	25	24	36 – 45	22	16	390	1163.000
	38	13	16,9	30	42	108	89	40	27	44 – 54	26	20	785	1163.100
	48	17	24,8	45	55	108	84	25	27	54 – 68	32	26	1425	1163.200
	58	17	34,9	52	68	128	99	40	27	68 – 82	44	38	2550	1163.300

6

Adapter Slot Clamping Elements • system V40/V70

EH 1068.100 - EH 1068.300

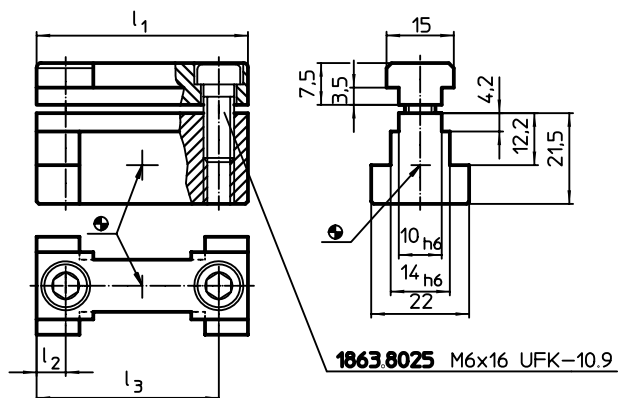


PRODUCT DESCRIPTION

Material

- Steel, case-hardened, ground

DRAWING



ORDER INFORMATION

System	Dimensions			Art. No.
	l_1	l_2 [mm]	l_3	
V40/V70	39,6	6,8	32,8	110
	13,0	6,5	–	42
	24,0	12,0	–	80

Adapter Slot Centering Blocks • system V40/V70

EH 1068.600

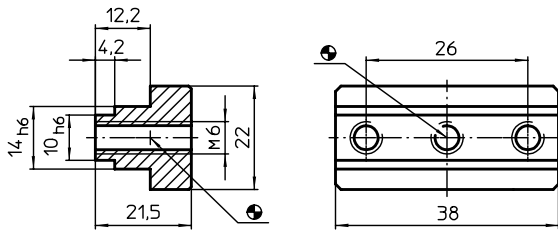


PRODUCT DESCRIPTION


Material

- Steel, case-hardened, ground

DRAWING



ORDER INFORMATION

System	 [g]	Art. No.
V40/V70	81	1068.600

6

Adapter Slot Blocks • system V40/V70

EH 1068.800

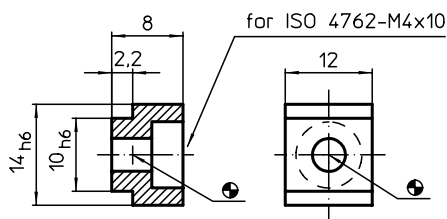


PRODUCT DESCRIPTION


Material

- Steel, case-hardened, ground

DRAWING



ORDER INFORMATION

System	 [g]	Art. No.
V40/V70	8	1068.800

STANDARD ASSORTMENTS V40

ASSORTMENT FOR THE SIMULTANEOUS CONSTRUCTION OF 5 FIXTURES, ART. NO. 1090.140

Qty.	Description	Art. No.	Qty	Description	Art. No.
System parts			Standard parts		
2	Base plate	1000.400	3	Grub screw	22540.0381
5	Spacer	1007.400	3	Grub screw	22540.0382
5	Spacer	1007.600	3	Screwed rest button, plain	22690.0021
5	Spacer	1007.700	3	Screwed rest button, plain	22690.0321
5	Spacer	1007.800	3	Self-aligning pad, plain	22730.0013
5	Spacer	1007.900	3	Self-aligning pad, ribbed	22730.0313
6	Mounting block	1010.100	5	Stud for T-nuts	23040.0582
2	Mounting block	1010.200	3	Stud for T-nuts	23040.0583
1	Mounting block	1010.300	3	Stud for T-nuts	23040.0584
3	Mounting block	1011.100	2	Conical seat	23050.0208
1	Mounting block	1011.200	5	Plain washer	23060.0008
1	Mounting block	1011.300	5	Fixture nut	23070.0008
1	Clamping bar	1013.600	2	Collar nut	23080.0008
3	Stop	1014.500	5	Extension nut	23090.0008
4	T-slot centering block	1029.600	2	Clamp	23150.0009
10	T-nuts	1030.100	3	Clamp with nose	23180.0209
15	T-nuts	1030.300	2	Down-hold clamp	23210.0502
8	T-clamping block	1031.100	1	Bedding support	23220.0085
3	T-clamping block	1031.200	4	Height adjusting cylinder	23310.0125
4	T-clamping block	1031.300	2	Height adjusting cylinder	23310.0126
1	Wrench	1032.100	2	Height adjusting cylinder	23310.0127
2	Intermediate plate	1047.700			
1	Support clamping bar	1047.800			
3	Supporting plate	1047.900			

ASSORTMENT FOR THE SIMULTANEOUS CONSTRUCTION OF 3 FIXTURES, ART. NO. 1090.120

Qty	Description	Art. No.	Qty	Description	Art. No.
System parts			Standard parts		
2	Base plate	1000.400	5	Grub screw	22540.0381
1	Base plate	1000.500	5	Grub screw	22540.0382
5	Spacer	1007.400	4	Screwed rest button, plain	22690.0021
5	Spacer	1007.600	3	Screwed rest button, spherical	22690.0121
5	Spacer	1007.700	3	Screwed rest button, ribbed	22690.0221
20	Spacer	1007.800	4	Screwed rest button, plain	22690.0321
5	Spacer	1007.900	3	Screwed rest button, spherical	22690.0421
8	Mounting block	1010.100	3	Screwed rest button, spherical	22690.0423
4	Mounting block	1010.200	3	Screwed rest button, ribbed	22690.0521
2	Mounting block	1010.300	4	Self-aligning pad, plain	22730.0013
6	Mounting block	1011.100	3	Self-aligning pad, ribbed	22730.0313
4	Mounting block	1011.200	5	Stud for T-nut	23040.0582
2	Mounting block	1011.300	5	Stud for T-nut	23040.0583
1	Slotted clamping angle	1012.100	3	Stud for T-nut	23040.0584
1	Clamping bar	1013.600	3	Conical seat	23050.0208
1	Clamping bar	1013.700	10	Plain washer	23060.0008
6	Stop	1014.500	5	Fixture nut	23070.0008
1	Thrust angle	1020.300	3	Collar nut	23080.0008
1	Thrust angle	1021.600	5	Extension nut	23090.0008
1	Thrust angle	1021.700	2	Clamp	23150.0009
5	T-slot centering block	1029.600	3	Clamp with nose	23180.0209
20	T-nut	1030.100	2	Down-hold clamp	23210.0501
37	T-nut	1030.300	2	Down-hold clamp	23210.0502
15	T-clamping block	1031.100	2	Bedding support	23220.0085
5	T-clamping block	1031.200	2	Down-thrust clamp	23310.0025
5	T-clamping block	1031.300	6	Height adjusting cylinder	23310.0125
1	Wrench	1032.100	4	Height adjusting cylinder	23310.0126
2	Intermediate plate	1047.700	2	Height adjusting cylinder	23310.0127
2	Support clamping bar	1047.800			
6	Supporting plate	1047.900			

The specified ranges are intended as recommendations.
The required parts vary with the workpiece.
The ranges can be modified as necessary

STANDARD ASSORTMENTS V40

ASSORTMENT FOR THE SIMULTANEOUS CONSTRUCTION OF 5 FIXTURES, ART. NO. 1090.140

Qty.	Description	Art. No.	Qty.	Description	Art. No.
System parts			Standard parts		
3	Base plate	1000.400	10	Grub screw	22540.0381
2	Base plate	1000.500	10	Grub screw	22540.0382
5	Spacer	1007.400	4	Screwed rest button, plain	22690.0021
5	Spacer	1007.500	3	Screwed rest button, spherical	22690.0121
5	Spacer	1007.600	3	Screwed rest button, ribbed	22690.0221
15	Spacer	1007.700	4	Screwed rest button, plain	22690.0321
20	Spacer	1007.800	4	Screwed rest button, plain	22690.0323
5	Spacer	1007.900	3	Screwed rest button, spherical	22690.0421
12	Mounting block	1010.100	3	Screwed rest button, spherical	22690.0423
5	Mounting block	1010.200	3	Screwed rest button, ribbed	22690.0521
3	Mounting block	1010.300	3	Screwed rest button, ribbed	22690.0523
6	Mounting block	1011.100	5	Ball-ended thrust screw	22700.0584
5	Mounting block	1011.200	6	Self-aligning pad, plain	22730.0013
3	Mounting block	1011.300	6	Self-aligning pad, ribbed	22730.0313
2	Slotted clamping angle	1012.100	5	Stud for T-nut	23040.0582
2	Slotted clamping angle	1012.300	10	Stud for T-nut	23040.0583
1	Clamping bar	1013.700	10	Stud for T-nut	23040.0584
1	Clamping bar	1013.800	10	Conical seat	23050.0208
8	Stop	1014.500	50	Plain washer	23060.0008
1	Thrust angle	1020.300	15	Fixture nut	23070.0008
1	Thrust angle	1021.500	10	Collar nut	23080.0008
1	Thrust angle	1021.600	10	Extension nut	23090.0008
1	Thrust angle	1021.700	4	Clamp	23150.0009
8	T-slot centering block	1029.600	6	Clamp with nose	23180.0209
30	T-nut	1030.100	6	Down-hold clamp	23210.0501
55	T-nut	1030.300	2	Down-hold clamp	23210.0502
25	T-clamping block	1031.100	5	Bedding support	23220.0085
20	T-clamping block	1031.200	5	Down-thrust clamp	23310.0025
10	T-clamping block	1031.300	20	Height adjusting cylinder	23310.0125
1	Wrench	1032.100	10	Height adjusting cylinder	23310.0126
1	Locating pin	1040.300	6	Height adjusting cylinder	23310.0127
1	Locating pin	1040.500			
2	Intermediate plate	1047.700			
2	Support clamping bar	1047.800			
9	Supporting plate	1047.900			
2	V-block	1048.200			
2	V-block	1048.300			
2	Locating segment	1048.400			
1	V-block	1048.500			
1	Adjustable rotating element	1048.600			
3	Positioning clamping bar, twinfaced	1049.200			

The specified ranges are intended as recommendations.

The required parts vary with the workpiece.

The ranges can be modified as necessary

STANDARD ASSORTMENTS V70

ASSORTMENT FOR THE SIMULTANEOUS CONSTRUCTION OF 2 FIXTURES, ART. NO. 1190.110 (V70) / 1290.110 (V70E-CO)

Qty.	Description	Art. No.	Qty.	Description	Art. No.
System parts			Standard parts		
2	Base plate	1100.700	2	Grub screw	22540.0401
5	Spacer	1107.400	3	Grub screw	22540.0422
5	Spacer	1107.600	1	Grub screw	22540.0423
5	Spacer	1107.700	3	Screwed rest button, plain	22690.0001
5	Spacer	1107.800	3	Screwed rest button, ribbed	22690.0201
5	Spacer	1107.900	3	Screwed rest button, plain	22690.0303
6	Mounting block	1110.100	3	Screwed rest button, ribbed	22690.0503
2	Mounting block	1110.200	3	Self-aligning pad, plain	22730.0020
1	Mounting block	1110.300	3	Self-aligning pad, ribbed	22730.0320
3	Mounting block	1111.100	10	T-nut	23010.0142
1	Mounting block	1111.200	20	T-nut, extended	23020.0140
1	Mounting block	1111.300	2	Stud for T-nut	23040.0602
1	Mounting block	1113.700	5	Stud for T-nut	23040.0623
4	Stop	1114.500	3	Stud for T-nut	23040.0625
2	T-slot centering block	1129.600	4	Conical seat	23050.0212
8	T-clamping block	1131.100	15	Plain washer	23060.0012
4	T-clamping block	1131.200	4	Fixture nut	23070.0012
2	T-clamping block	1131.500	6	Collar nut	23080.0012
2	T-clamping block	1131.600	5	Extension nut	23090.0012
2	T-clamping block	1131.700	2	Clamp	23150.0015
1	Wrench	1132.100	2	Down-hold clamp	23210.0522
1	Butt strap	1139.400	2	Bedding support	23220.0150
2	Clamping head	1147.700	3	Cylindrical stop	23280.0114
1	Support clamping bar	1147.800	6	Height adjusting cylinder	23310.0140
4	Supporting plate	1147.900	4	Height adjusting cylinder	23310.0141
4	Clamp	23180.0213	1	Height adjusting cylinder	23310.0142
4	Down-thrust clamp	23310.0054			
4	Positioning ring	23310.0350			

As required

	Locating pin	1140.300- 1143.700
--	--------------	-----------------------

The specified ranges are intended as recommendations.
The required parts vary with the workpiece.
The ranges can be modified as necessary

STANDARD ASSORTMENTS V70

ASSORTMENT FOR THE SIMULTANEOUS CONSTRUCTION OF 3 FIXTURES, ART. NO. 1190.120 (V70) / 1290.120 (V70ECO)

Qty.	Description	Art. No.	Qty.	Description	Art. No.
System parts			Standard parts		
1	Base plate	1100.800	3	Grub screw	22540.0401
2	Base plate	1100.700	5	Grub screw	22540.0421
5	Spacer	1107.400	5	Grub screw	22540.0423
5	Spacer	1107.600	6	Screwed rest button, plain	22690.0001
10	Spacer	1107.700	3	Screwed rest button, plain	22690.0301
20	Spacer	1107.800	4	Screwed rest button, ribbed	22690.0201
8	Mounting block	1110.100	4	Screwed rest button, plain	22690.0303
4	Mounting block	1110.200	3	Screwed rest button, spherical	22690.0403
2	Mounting block	1110.300	3	Screwed rest button, ribbed	22690.0501
6	Mounting block	1111.100	3	Screwed rest button, ribbed	22690.0503
4	Mounting block	1111.200	3	Self-aligning pad, plain	22730.0020
2	Mounting block	1111.300	3	Self-aligning pad, ribbed	22730.0320
1	Clamping block	1113.600	3	Self-aligning pad	22740.0317
1	Clamping block	1113.700	20	T-nut	23010.0142
6	Stop	1114.500	50	T-nut, extended	23020.0140
2	Thrust angle	1120.300	5	T-nut, rhombus	23020.0640
1	Thrust angle	1120.400	3	Stud for T-nut	23040.0602
2	T-slot centering block	1129.600	6	Stud for T-nut	23040.0623
18	T-clamping block	1131.100	5	Stud for T-nut	23040.0624
7	T-clamping block	1131.200	6	Stud for T-nut	23040.0625
4	T-clamping block	1131.500	4	Stud for T-nut	23040.0626
4	T-clamping block	1131.600	6	Conical seat	23050.0212
2	T-clamping block	1131.700	20	Plain washer	23060.0012
1	Wrench	1132.100	6	Fixture nut	23070.0012
1	Wrench	1139.400	10	Collar nut	23080.0012
1	Wrench	1139.500	6	Extension nut	23090.0012
2	Intermediate plate	1147.700	2	Clamp	23150.0015
2	Support clamping bar	1147.800	2	Clamp	23150.0016
6	Supporting plate	1147.900	4	Clamp with nose	23180.0213
As required			2	Down-hold clamp	23210.0521
			2	Down-hold clamp	23210.0522
			3	Bedding support	23220.0150
			3	Cylindrical stop	23280.0114
			4	Down-thrust clamp	23310.0054
			8	Height adjusting cylinder	23310.0140
			6	Height adjusting cylinder	23310.0141
			2	Height adjusting cylinder	23310.0142
			2	Height adjusting cylinder	23310.0160
			4	Positioning ring	23310.0350

The specified ranges are intended as recommendations.
The required parts vary with the workpiece.
The ranges can be modified as necessary

STANDARD ASSORTMENTS V70

ASSORTMENT FOR THE SIMULTANEOUS CONSTRUCTION OF 5 FIXTURES, ART. NO. 1190.140 (V70) / 1290.140 (V70ECO)

Qty.	Description	Art. No.	Qty.	Description	Art. No.
System parts			Standard parts		
2	Base plate	1100.700	5	Grub screw	22540.0401
2	Base plate	1100.800	10	Grub screw	22540.0421
1	Base plate	1100.500	10	Grub screw	22540.0422
5	Spacer	1107.400	10	Grub screw	22540.0423
5	Spacer	1107.500	6	Screwed rest button, plain	22690.0001
5	Spacer	1107.600	3	Screwed rest button, plain	22690.0002
5	Spacer	1107.700	4	Screwed rest button, ribbed	22690.0201
20	Spacer	1107.800	3	Screwed rest button, plain	22690.0301
5	Spacer	1107.900	6	Screwed rest button, plain	22690.0303
10	Spacer	1108.000	3	Screwed rest button, plain	22690.0305
5	Spacer	1108.200	3	Screwed rest button, spherical	22690.0401
12	Mounting block	1110.100	3	Screwed rest button, spherical	22690.0403
5	Mounting block	1110.200	3	Screwed rest button, ribbed	22690.0501
3	Mounting block	1110.300	6	Screwed rest button, ribbed	22690.0503
6	Mounting block	1111.100	3	Screwed rest button, ribbed	22690.0505
5	Mounting block	1111.200	6	Self-aligning pad, plain	22730.0020
2	Mounting block	1111.300	3	Self-aligning pad, plain	22740.0017
1	Slotted clamping angle	1112.100	6	Self-aligning pad, ribbed	22730.0320
2	Clamping bar	1113.700	3	Self-aligning pad, ribbed	22740.0317
1	Clamping bar	1113.800	30	T-nut	23010.0142
4	Support clamping bar	1114.000	80	T-nut, extended	23020.0140
12	Stop	1114.500	10	T-nut, rhombus	23020.0640
2	Thrust angle	1120.300	5	Stud for T-nut	23040.0602
1	Thrust angle	1120.400	5	Stud for T-nut	23040.0622
4	T-slot centering block	1129.600	10	Stud for T-nut	23040.0623
3	T-block	1130.400	10	Stud for T-nut	23040.0624
30	T-clamping block	1131.100	10	Stud for T-nut	23040.0625
20	T-clamping block	1131.200	10	Stud for T-nut	23040.0626
5	T-clamping block	1131.500	10	Stud for T-nut	23040.0627
5	T-clamping block	1131.600	10	Conical seat	23050.0212
3	T-clamping block	1131.700	40	Plain washer	23060.0012
1	Wrench	1132.100	10	Fixture nut	23070.0012
1	Wrench	1139.400	15	Collar nut	23080.0012
1	Wrench	1139.500	10	Extension nut	23090.0012
4	Intermediate plate	1147.700	3	Clamp	23150.0015
3	Support clamping bar	1147.800	3	Clamp	23150.0016
10	Supporting plate	1147.900	6	Clamp with nose	23180.0213
2	Locating segment	1148.400	4	Down-hold clamp	23210.0521
1	V-block	1148.500	2	Down-hold clamp	23210.0522
3	Positioning clamping bar	1149.000	5	Bedding support	23220.0150
			3	Cylindrical stop	23280.0114
			3	Cylindrical stop	23280.0214
			2	Down-thrust clamp	23310.0051
As required					
	Locating pin	1140.300- 1143.700	4	Down-thrust clamp	23310.0054
			2	Down-thrust clamp	23310.0057
			15	Height adjusting cylinder	23310.0140
			8	Height adjusting cylinder	23310.0141
			4	Height adjusting cylinder	23310.0142
			5	Height adjusting cylinder	23310.0160
			4	Height adjusting cylinder	23310.0161
			2	Height adjusting cylinder	23310.0162
			8	Positioning ring	23310.0350

The specified ranges are intended as recommendations.
The required parts vary with the workpiece.
The ranges can be modified as necessary